

User's Guide

iPORT/LAN™

Ethernet to I²C Host Adapter
ASCII Fast Mode
with iPort Utility Pack Software



www.mcc-us.com

Introduction

The MCC iPort/LAN™ Ethernet to I²C Host Adapter with ASCII Fast Mode (#MIIC-205) allows any Windows XP, Vista, 7, or 8 (x86/x64) PC, with an ethernet port or network access, to become an I²C Master or Slave device, transmitting or receiving I²C messages between the PC and one or more local (LAN) or remote (Internet) I²C devices across an I²C Bus.

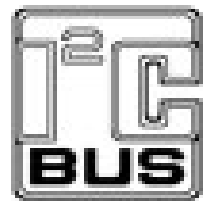
This user's guide describes the installation and operation of the iPort/LAN host adapter, Virtual Communication Port (VCP) driver, iPort Utility Pack Software for Windows, and includes the Programmer's Reference for creating custom applications.

Are you new to I²C? Want to know more? We suggest you review “What is I²C?” at www.mcc-us.com/I2CBusTechnicalOverview.pdf.

This MCC product uses NXP (Philips) components and is licensed to use the I²C Bus.

“Purchase of Philips I²C components conveys a license under the Philips' I²C patent to use the components of the I²C system, provided the system conforms to the I²C specifications defined by Philips.”

I²C is a trademark of NXP (Philips) Corporation.



07-JAN-2016

Copyright© 2015 by Micro Computer Control Corporation. All rights are reserved. No part of this publication may be reproduced by any means without the prior written permission of Micro Computer Control Corporation, PO Box 275, Hopewell, New Jersey 08525 USA.

DISCLAIMER: Micro Computer Control Corporation makes no representations or warranties with respect to the contents hereof and specifically disclaims any implied warranties of merchantability or fitness for any particular purpose. Further, Micro Computer Control Corporation reserves the right to revise the product described in this publication and to make changes from time to time in the content hereof without the obligation to notify any person of such revisions or changes.

WARNING - Life Support Applications: MCC products are not designed for use in life support appliances, devices, or systems where the malfunction of the product can reasonably be expected to result in a personal injury.

WARNING - Radio Frequency Emissions: This equipment has been tested and found to comply with the limits for a Class A digital device, pursuant to part 15 of the FCC rules. These limits are designed to provide reasonable protection against interference when the equipment is operated in a commercial environment. This equipment generates, uses, and can radiate radio frequency energy and, if not installed and used in accordance with the instruction manual, may cause interference to radio communications. Operation of this equipment in a residential area is likely to cause interference, in which case the user will be required to correct the interference at his own expense.

WARNING - Electrostatic Discharge (ESD) Precautions: Any damage caused by Electrostatic Discharge (ESD) through inadequate earth grounding is NOT covered under the warranty of this product. See the “Electrostatic (ESD) Precautions” section of this guide for more information.

Printed in the United States of America

Table of Contents

Part 1 - iPort/LAN Ethernet to I²C Bus Host Adapter	1
1 Overview	2
iPort/LAN Ethernet to I ² C Bus Host Adapter	2
iPort/LAN Virtual Communications Port (VCP)	2
iPort Utility Pack Software	3
iPort/LAN Programmer's Reference	3
Packing Slip	3
System Requirements	3
2 Interconnects	3
Ethernet Connector	4
Virtual Communications Port (VCP)	4
+5VDC Power Jack	5
I ² C Interface Connector	5
Interrupt (/INT) Signal Connector	6
3 Hardware Configuration	7
Pull-up Resistors	7
Connecting to a 3.3 Volt Target System	7
Connecting to an SMBus Target System	7
4 ESD (Electrostatic Discharge) Precautions	8
Host Computer Grounding	8
Grounding Solutions	9
5 Virtual ComPort	9
6 Hardware Set-Up	14
Ethernet Connection	14
I ² C Bus Connection	14
+5VDC Power Connection	14

Part 2 - iPort Utility Pack for Windows	15
1 iPort Utility Pack for Windows	17
iPort Message Center	17
iPort Message Manager	18
2 System Requirements	19
3 iPort Utility Pack Installation	19
Installing from CD	19
Installing from the Web	19
4 iPort Message Center	20
Message Center Operations	21
Starting the Message Center	21
Selecting the Adapter	21
Select the Communications Port	22
Options Menu	22
Establish Adapter Communications Link	22
Entering or Editing I ² C Messages	22
Set I ² C Address	23
Set Message Read/Write Direction	23
Specify Repeated Start Messages	23
Set Time Delay	24
Specify Write Data or Read Byte Count	24
Inserting and Deleting Messages	25
Saving or Loading Message Lists	25
Send the Message List	25
Special Event Handling	25
Slave Not Acknowledging	26
Command Line Arguments	27
Set Adapter Type	28
Set RS-232 Communication Port	28
Set RS-232 Baud Rate	28
Set I ² C Bus Clock Rate	28
Enable /INT Signal Monitor	29
Stop On Busy	29
Stop On Arbitration Loss	29
Stop On Slave Negative Acknowledgment	29
Beep On Busy	29

Beep On Arbitration Loss	30
Beep On Slave Negative Acknowledgment	30
Beep On /INT Assert	30
Load I ² C Message List File	30
Saved I ² C Message List File	31
Auto Open	31
Auto Send	31
Auto Exit	31
5 iPort Message Manager	32
Message Manager Operations	33
Starting the Message Manager	33
Select the Adapter	33
Establish Adapter Communications Link	34
Basic Setup	34
Advanced Setup	35
Adapter's Own I ² C Slave Address	35
General Call Enable	35
I ² C Bus Master Bit Rate	35
I ² C Bus Time-Out	35
Enable INT Signal Monitor	35
Diagnostic Setup	36
Log File Level	36
Log File Name	36
Log File Size	36
Sending I ² C Messages	37
Master Operations	37
Specifying the Destination Address	37
Repeated Start Messages	37
Auto Repeat	38
Master Transmitting Data	38
Specifying Master Tx Message Bytes	38
Sending Master Transmit Messages	39
Master Receive Data	39
Specifying Data to Read	39
Negative Acknowledge Last Byte	40
Master Transmit and Receive	40
Slave Operations	40
Slave Transmit Data	40
Slave Receive Data	40

6 Uninstalling Software Components	41
Uninstalling iPort Utility Pack for Windows	41
Uninstalling VCP Device Driver	41
Part 3 - iPort/LAN Programmer's Reference	43
Quick Start	44
ASCII Command Interface	45
Synchronous Interface Events	46
iPort/LAN Reset	46
Status Display	47
Serial Communications Baud Rate	47
Close I ² C Connection	47
Set Destination I ² C Slave Address	48
Echo/Prompt Control	48
Serial Communications Flow Control	48
I ² C General Call Control	49
Hex Only Display Control	49
Set iPort/LAN's Own I ² C Slave Address	50
I ² C Bus Clock Rate Control	50
Command Menu Display	50
Interrupt Signal Control/Status	51
Open I ² C Connection	51
Master Read Message	52
Slave Transmit Message	53
Master Transmit Message	54
Set I ² C Bus Time-out in msec	55
Display Firmware Version	55
eXtended Commands	55
Display Tx bYte Count	58
Asynchronous Interface Events	59
Slave Transmit Request	59
Slave Receive Complete	59
General Call Receive Complete	59
iPort/LAN Ready	60
Slave Not Acknowledging	60
iPort/LAN Busy	60
I ² C Bus Arbitration Loss	60
I ² C Bus Error Detected	60
I ² C Bus Time-out Detected	61

iPort/LAN Connection Closed	61
Invalid Command Argument	61
Slave Transmit Request Not Active	61
Invalid iPort/LAN Command	61
iPort/LAN Receive Buffer Overflow	62
Example Code	63
iPort/LAN Reset	63
iPort/LAN Initialization	63
Master Transmit Message	63
Master Receive Message	63
Communication Event Processing	64
iPort/LAN Revision Report	67
Additional Information	67
Appendix A - I²C Connector Information	68
Declaration of Conformity	69

Part 1



Ethernet to I²C Bus Host Adapter with ASCII Fast Mode

User's Guide

Model: MIIC-205

1 Overview

The MCC iPort/LAN Ethernet to I²C Bus Host Adapter with ASCII Fast Mode (#MIIC-205) allows any Windows XP, Vista, 7, or 8 (x86/x64) PC with network access, to become an I²C Master or Slave device, transmitting or receiving I²C messages between the PC and one or more local (LAN) or remote (Internet) I²C devices across an I²C Bus.

iPort/LAN Product Features:

- Access Local (LAN) or Remote (Internet) I²C devices from your PC.
- Supports 7-bit addressing Standard (100k) and Fast (400k) Mode I²C Bus Activity.
- Supports Bus Master and Slave, Transmit and Receive, and /INT Signaling.
- Compatible with I²C bit rates up to 400 KHz.
- Compatible with 3.3V to 5V I²C Bus voltages.
- Includes switch-enabled internal I²C Pull-Up resistors.
- Includes our free I²C Message Center and Message Manager Windows Applications.
- Compatible with our free iBurner EEPROM Programming Software
- Compatible with our free Microsoft .NET Class Library and LabVIEW VI Library.
- Includes an easy to use Virtual Communications Port (VCP) driver.
- Simple ASCII Text Commands make building custom I²C applications quick and easy. Programmer's Reference and Sample Programs included.
- Fully Compatible with iPort/AI, iPort/AFM, iPort/USB, and i2cStick applications. No software changes required.

The iPort/LAN package includes the following items:

1.1 iPort/LAN Ethernet to I²C Bus Host Adapter

The iPort/LAN adapter is an ethernet-based device that plugs into a local (LAN) or remote (Internet) network and generates I²C Bus signals.

1.2 iPort/LAN Virtual Communications Port (VCP)

The iPort/LAN Virtual Communications Port (VCP) driver creates a virtual serial port within the iPort/LAN device. To a Windows host computer, the VCP looks just like a legacy serial communications port (COMn), allowing standard serial

communication programming methods to work unchanged. No special network programming is required. The iPort/LAN VCP is available to the host computer whenever the iPort/LAN is attached to an accessible network.

1.3 iPort Utility Pack Software

This free software package includes the iPort Message Center and Message Manager applications to help you easily send and receive I²C Bus messages.

1.4 iPort/LAN Programmer's Reference

This section of the iPort/LAN User's Guide provides a programmer's guide to creating custom I²C Bus applications. Find additional sample programs and complete projects on our web site's Sample Program page.

1.5 Packing Slip

This package includes the following items:

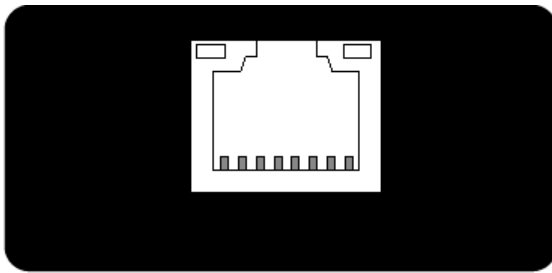
- iPort/LAN Ethernet to I²C Bus Host Adapter (#MIIC-205).
- Ethernet Cable.
- I²C Bus Clip Lead Cable.
- /INT-Trigger Cable.
- Global Power Supply.
- iPort/LAN Quick-Start Guide.
- iPort Utility Pack for Windows (CD or online).

1.6 System Requirements

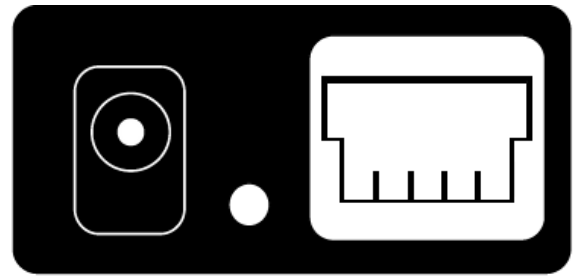
- a. A host computer with ethernet network interface.
- b. Windows XP, Vista, 7, or 8 (x86/x64).

2 Interconnects

The iPort/LAN includes four interconnections:



Ethernet Connector



+5VDC Power Jack INT Line I²C Interface Connector

2.1 Ethernet Connector

The Ethernet connector provides connection from the I²C adapter to a local or remote host computer, with Link Detection (Yellow, Left) and Network Activity (Green, Right) status LEDs.

A typical setup uses standard ethernet cables and ethernet hub or switch between the host computer ethernet port and the iPort/LAN adapter. A direct-connect setup uses a crossover ethernet cable to connect the iPort/LAN directly to the ethernet port on a host computer.

2.1.1 Virtual Communications Port (VCP)

The iPort/LAN provides a Virtual Communications Port (VCP) interface via a software driver installed on the host computer. Once the driver is installed, Windows will automatically create a new ComPort (COMn) on the host computer. The VCP hides the complexities of a network physical interface, and provide access to local or remote iPort/LAN devices.

Application programs running on the host computer communicate with the iPort/LAN via the standard Windows Communications Application Program Interface (API). See section 5, Virtual ComPort, for additional VCP driver information.

Communication signals included in the VCP interface include:

- TX - Transmit Data from the Host Computer to the iPort/LAN.
- RX - Receive Data from the iPort/LAN to the Host Computer.
- RTS - Request to Send from the Host Computer to iPort/LAN.
- CTS - Clear to Send from the iPort/LAN to the Host Computer.

2.2 +5VDC Power Jack

The iPort/LAN adapter requires 250ma of REGULATED +5 volt power. This power can be supplied in one of two ways:

- Power via the +5VDC power jack.

If the I²C Bus adapter is powered via its +5VDC power jack, up to 150ma of +5VDC power is available to external circuits via the +5V wire in the I²C Bus connector.

- Power via the I²C Bus interface connector.

If 250ma of REGULATED +5V power is available in the target system, the I²C Bus adapter can be powered via the +5V wire in the I²C Bus connector.

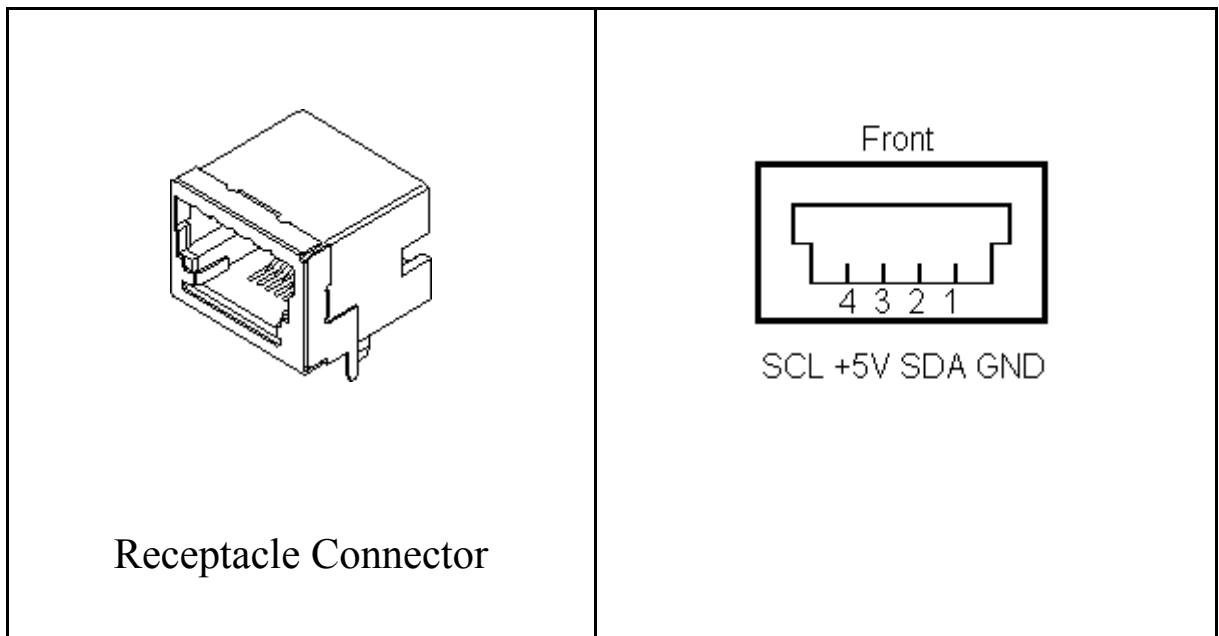
See the “Hardware Setup” section for additional details.

2.3 I²C Interface Connector

The I²C adapter includes a four wire, positive locking, modular receptacle connector (see Appendix A) for interfacing to an external I²C Bus. Lines provided include I²C Clock (SCL), I²C Data (SDA), Ground, and +5V.

Minimum wiring for I²C Bus communications include I²C Bus Clock, Data, and Ground.

Use of the +5V (V) wire is optional. Connect this wire to the target system to power the I²C Bus adapter and the target system from a common regulated +5V power supply.



An I²C Bus Clip Lead Cable (White=SCL, Red=+5VDC, Green=SDA, Black=Ground) is provided to connect the I²C adapter to an external I²C Bus. I²C Bus Interface Cables and modular receptacle connectors are available (see Appendix A). Since there is no standard I²C Bus connector, you may want to add a modular receptacle connector to your target system, or cut off one end of an Interface cable and add a connector compatible with your target system.

2.4 Interrupt (/INT) Signal Connector

The Interrupt (/INT) signal is an extra pin found on some I²C devices. The /INT signal allows a slave-only device to attract the attention of a bus master device by lowering the /INT signal to a logical low voltage level.

The iPort/LAN provides an open-drain /INT signal which can be connected to a corresponding pin on a master or slave device. The /INT signal allows the iPort/LAN to participate in interrupt signaling between master or slave devices.

An interrupt output (/INT=low) is generated upon receiving an iNterrupt Assert command from the host computer. The interrupt signal is released (/INT = high) when the iPort/LAN is addressed as an I²C Bus slave device, or an iNterrupt Release command is received from the host computer.

Interrupt monitoring is enabled upon receiving an Enable /INT Monitor command from the host computer. Interrupt monitoring causes the iPort/LAN to monitor the /INT signal level, and send a notification to the host computer when the /INT signal changes state.

3 Hardware Configuration

3.1 Pull-up Resistors

I²C Bus systems are based on open-collector technology requiring pull-up devices on each signal wire. These pull-up devices usually take the form of pull-up resistors connected to bus power.

The I²C adapter includes a slide switch used to enable or disable internal +5VDC I²C Bus 1.8K ohm pull-up resistors attached to the SCL, SDA, and /INT lines. Every I²C Bus system must have at least one pull-up on the signal lines. Use this switch to configure the pull-up resistors for your system.

3.2 Connecting to a 3.3 Volt Target System

If you are connecting the I²C adapter to a 3.3 volt target system, you should follow these steps BEFORE applying power:

- Shut off the iPort/LAN internal pull-ups (See Pull-up Resistor section). Use external pull-ups to the target system's 3.3V power. These pull-ups may already be present in the target system.
- Disconnect the I²C Bus connector +5V wire from the target system. The iPort/LAN will be powered from its +5VDC power jack, and the target system will be powered by its own 3.3V power supply.

The I²C Bus adapter is a 5-volt device. Any signal at or above 3.3V on the SCL, SDA, and /INT lines is high enough for the adapter to see a Logical 1.

3.3 Connecting to an SMBus Target System

If you are connecting the I²C adapter to a SMBus target system, you should follow these steps BEFORE applying power:

- Shut off the iPort/LAN internal pull-ups (See Pull-up Resistor section).
- Use external SMBus rated (approximately 15k ohms) pull-up resistors. These pull-ups may already be present in the target system.
- Visit our I²C versus SMBus FAQ page (www.mcc-us.com/I2CSMBusFAQ.htm).
- See the SMBus Specification for additional details.

Special Note for SMBus Users: MCC's I²C adapters are designed to be I²C Bus

compatible, not SMBus compatible. Some features of the SMBus protocol not supported include time-outs, device reset, and Packet Error Check byte processing. The non-supported SMBus features may, or may not, permit the use of the I²C adapter in your SMBus application. Consult the MCC FAQ web page and SMBus Specification for details.

4 ESD (Electrostatic Discharge) Precautions

Electrostatic discharge is defined as the transfer of charge between bodies at different electrical potentials. Electrostatic discharge can change the electrical characteristics of a semiconductor device, degrading or destroying it. Electrostatic discharge also may upset the normal operation of an electronic system, causing equipment malfunction or failure.

When connecting the I²C adapter to a host computer and a target system, extreme care must be taken to avoid electrostatic discharge. Failure to follow ESD protection procedures when using the I²C adapter could damage the host computer, I²C adapter, or the target system, and void product warranty coverage.

4.1 Host Computer Grounding

Case 1 - Desktop and Single-board Computers. The chassis on a desktop or single-board host computer must be connected to earth ground to comply with safety regulations. If the computer chassis is NOT connected to earth ground for some reason (i.e., use of a two-prong power mains plug), the host computer power supply ground will float to some unknown voltage potential.

Case 2 - Laptop Computers. Laptop computers present special ESD problems. Most laptop computers use an external double-insulated mains power supply which is NOT connected to the mains earth ground. This means that the laptop chassis is floating at some unknown voltage potential.

In either case, upon connection to the I²C adapter and the target system, the host computer will discharge energy through its serial port to the I²C adapter, and on to the target system. This discharge could damage the host computer, I²C adapter, and the target system.

4.2 Grounding Solutions

To avoid damage to the host computer, I²C adapter, or target system, follow these instructions:

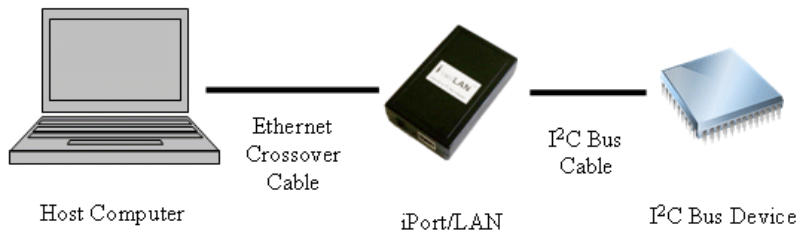
- Wear an earth grounded wrist strap, or discharge any static charge build-up, when handling the I²C adapter or any target system devices.
- Ensure that both the host computer and target system are connected to a common earth ground point.
- Make sure that all interconnections are made BEFORE applying power to the host computer, I²C adapter, and target system.
- If you are using a laptop computer or host computer that is NOT connected to mains earth ground, make a hard-wired connection from the host computer (i.e., port connector shell) and the target system ground connector to a common earth ground point.
- Avoid plugging and unplugging system components while the host computer or target system is powered.
- Ensure that any devices connected to the target system are properly grounded to the common earth ground point.
- If unsure how to properly ground system components, seek electrical expert help.

WARNING: Any damage caused by Electrostatic Discharge (ESD) through inadequate earth grounding is NOT covered under the warranty of this product.

5 Virtual ComPort

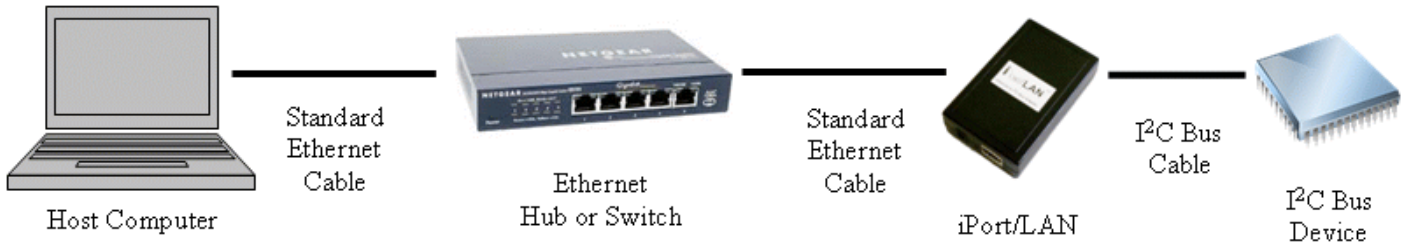
Communication between a host computer and the iPort/LAN is based upon a Virtual ComPort (VCP) driver installed on the host computer, and a network connection between the host computer and the iPort/LAN. The VCP driver associates a host computer ComPort number with the network address of the iPort/LAN. Once the VCP driver is installed, the host computer uses the Virtual ComPort to communicate with the iPort/LAN.

A host computer can establish communication with an iPort/LAN three different ways, Direct Connect, Local Connect, or Remote Connect.



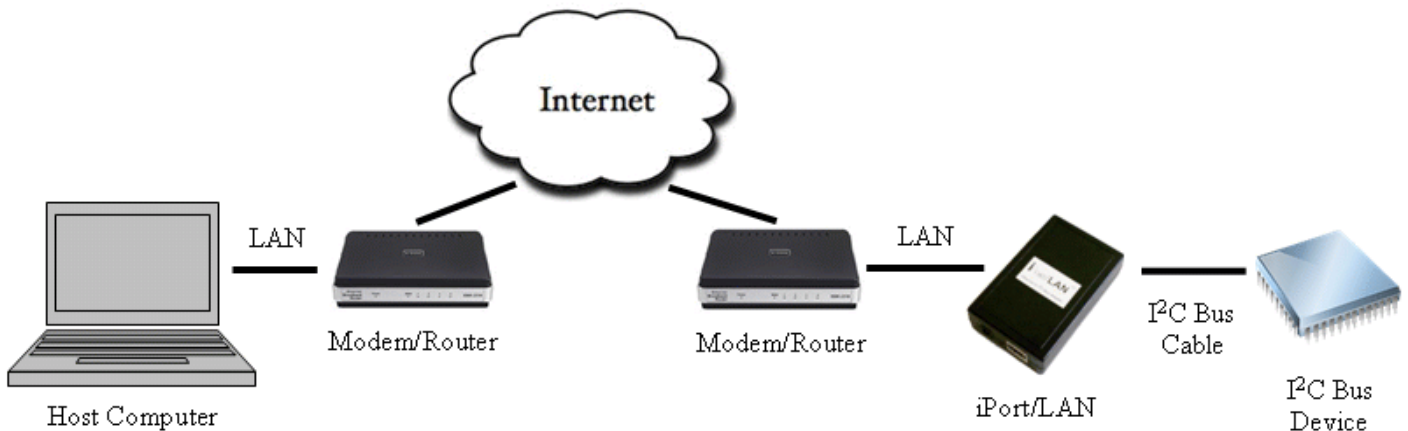
Direct Connect

Direct Connect provides a direct connection between the host computer and the iPort/LAN. A Virtual ComPort (VCP) driver is installed on the host computer, and an Ethernet Crossover Cable is used to connect the iPort/LAN to a wired Ethernet Port on the host computer. During VCP driver installation on the host computer, the iPort/LAN is assigned an IP address and a ComPort number.



Local Connect

Local Connect provides a local connection between the host computer and the iPort/LAN over a Local Area Network (LAN). A Virtual ComPort (VCP) driver is installed on the host computer, and a Standard Ethernet Cable is used to connect the iPort/LAN to the local network. During VCP driver installation on the host computer, the iPort/LAN is assigned a local IP address and a ComPort number.

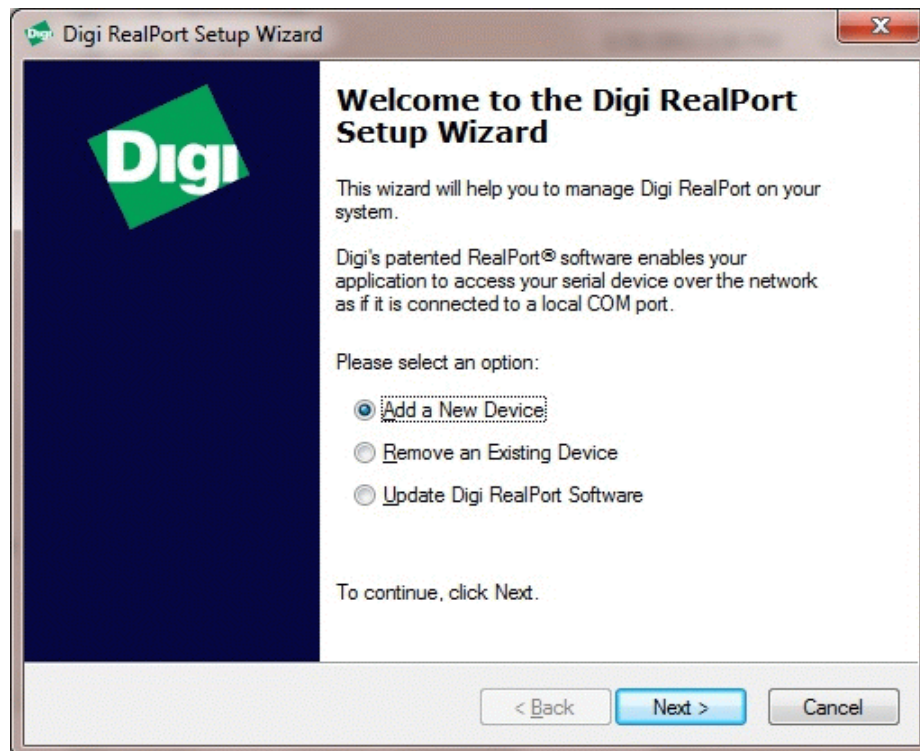


Remote Connect

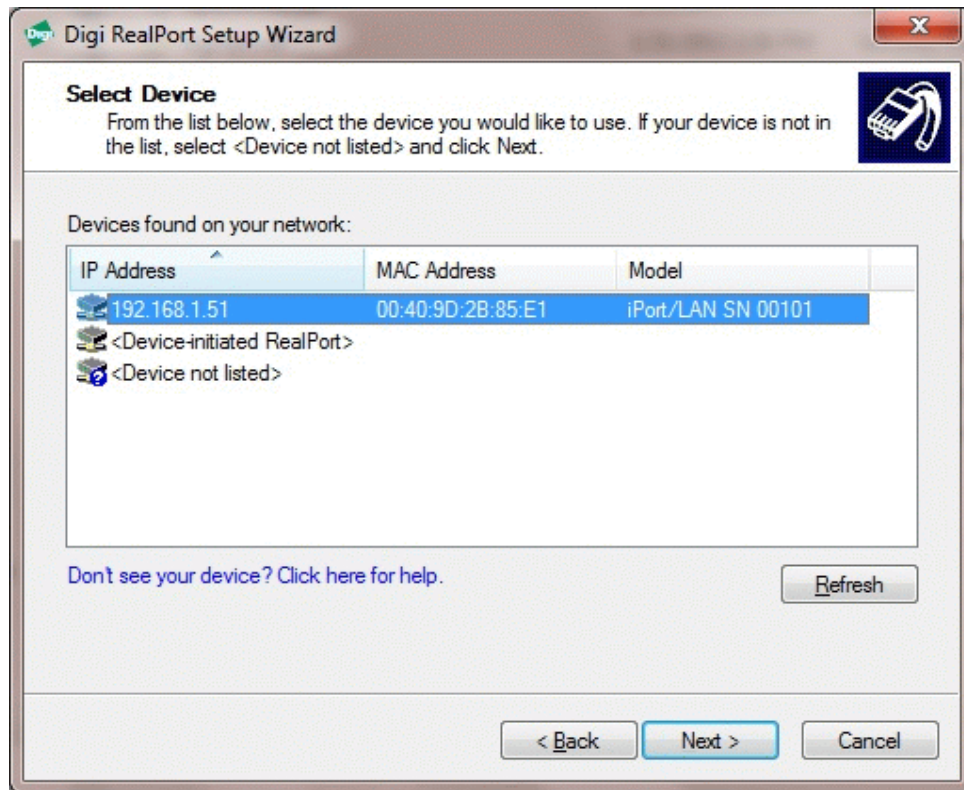
Remote Connect provides a remote connection between the host computer and the iPort/LAN over the Internet. A Virtual ComPort (VCP) driver is installed on the host computer, and a Standard Ethernet Cable is used to connect the iPort/LAN to the local network. During VCP driver installation on the host computer, the iPort/LAN is assigned the public IP address of the iPort/LAN local Modem/Router and a ComPort number. A Port-Forwarding rule, added to the iPort/LAN local Modem/Router, directs inbound Internet traffic from the host computer to the local IP address assigned to the iPort/LAN.

VCP Driver Installation

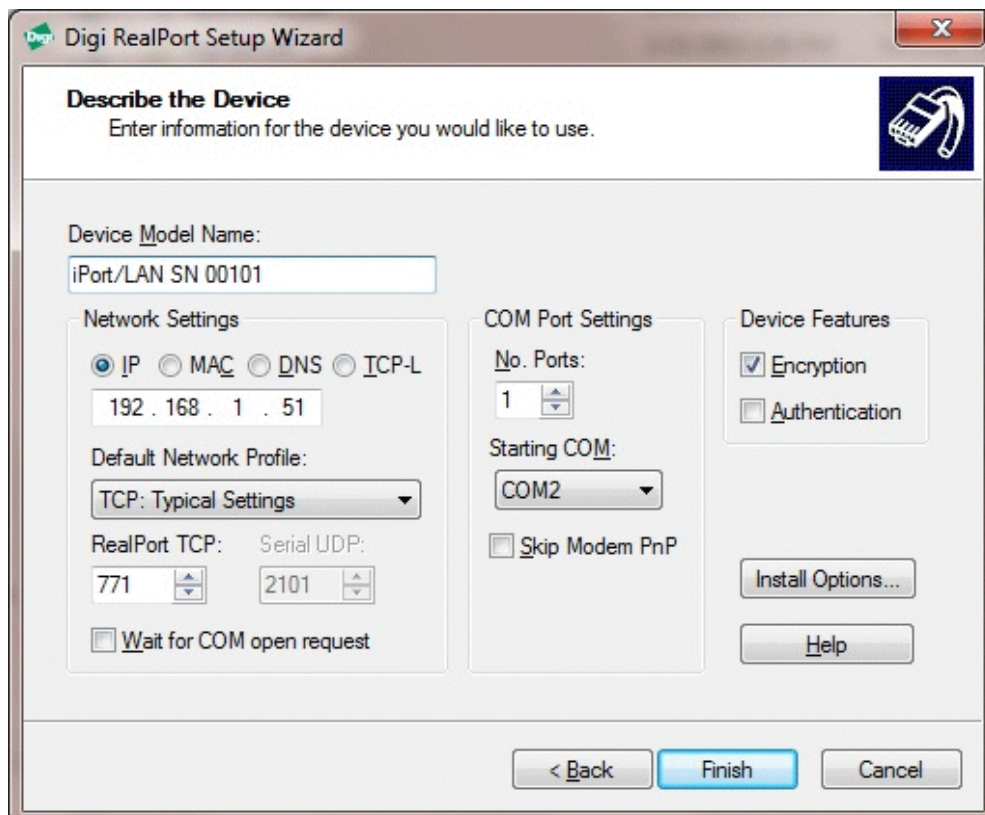
Plug the iPort/LAN into your network and apply power, install the iPort Utility Pack (available on CD or online) on the host computer, and select the iPort/LAN driver installer feature.



The iPort/LAN uses the Digi RealPort Virtual ComPort Driver. The Setup Wizard runs at the completion of the iPort Utility Pack installation. Use the Setup Wizard to add the iPort/LAN Virtual ComPort to the host computer.

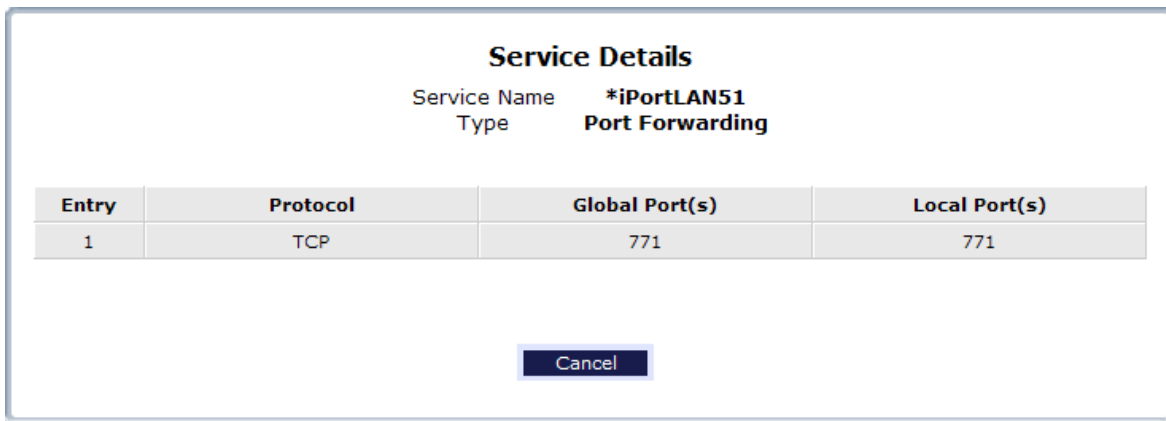


The Setup Wizard scans your network for connected iPort/LAN devices. For Direct or Local connected devices, select the found device and click Next. For Remote connected devices, select “Device Not Listed”, and click Next.



For Direct or Local connected devices, the Setup Wizard provides default setting for the iPort/LAN Device Name, IP Address, ComPort Number, and TCP Port Number. Default settings can be accepted as is, or modified as required by your local network administrator.

For Remote connected devices, the iPort/LAN should be assigned the public IP address of its local Modem/Router. This information should be available from the remote site network administrator. A Port-Forwarding rule should be added to the iPort/LAN local Modem/Router to direct inbound Internet traffic from the host computer to the local IP address assigned to the iPort/LAN.



See the Digi RealPort Setup Wizard Help, or the Digi RealPort Advanced Setup Guide (included in the iPort Utility Pack Documents), for information on RealPort VCP setup and configuration.

In addition to during initial iPort Utility Pack installation, the iPort/LAN VCP driver can be installed, modified, or removed at any time by clicking Start, Programs, iPort Utility Pack, Drivers, Install(Uninstall), iPortLAN Driver Install(Uninstall).

Additional device driver setup and configuration is available in Windows *Device Manager* under *Multi-Port Serial Adapters* or *Port (COM & LPT)*.

Once the VCP driver is installed, the host computer can communicate with the iPort/LAN via a standard ComPort Application Program Interface (API), terminal emulation software, MCC's MS.NET Class Library interface, or MCC's LabVIEW Virtual Instrument (VI) Library interface.

6 Hardware Set-Up

This section provides information on connecting the I²C adapter to your host computer and I²C Bus target system.

1. Ethernet Connection

After completing the Driver Installation instructions above, Windows will automatically install the VCP driver at system power-up and assign the selected communications port number (COMn).

You can find the ComPort number assigned to the iPort/LAN by running the iPort Utility Pack Message Center or Message Manager software, and selecting the iPort/LAN device. You can also use Windows Device Manager (Start | Settings | Control Panel | System | Device Manager | Ports (COM & LPT)) to find or reassign the ComPort number assigned to the iPort/LAN.

2. I²C Bus Connection

Connect the I²C Bus cable to the I²C adapter and your I²C device. You can make this connection with the included I²C Interface Cable (as is, or modified), or an optional I²C Clip-Lead cable.

The I²C interconnect includes a +5V wire. You may not need to, or want to, connect the +5V wire to your target system. Refer to the “+5VDC Power Jack” and “Hardware Configuration” sections for details on pull-up resistors and connecting the optional +5V wire.

3. +5VDC Power Connection

Connect the external power supply to the iPort/LAN power jack. The external power supply powers the iPort/LAN, and supplies optional power to the target system via the I²C connector. See “+5VDC Power Jack” section for additional details.

If you have any questions on I²C adapter setup and configuration, please visit our FAQ page (<http://www.mcc-us.com/faq.htm>), or contact our technical support team (support@mcc-us.com).

Part 2

iPort Utility Pack for Windows

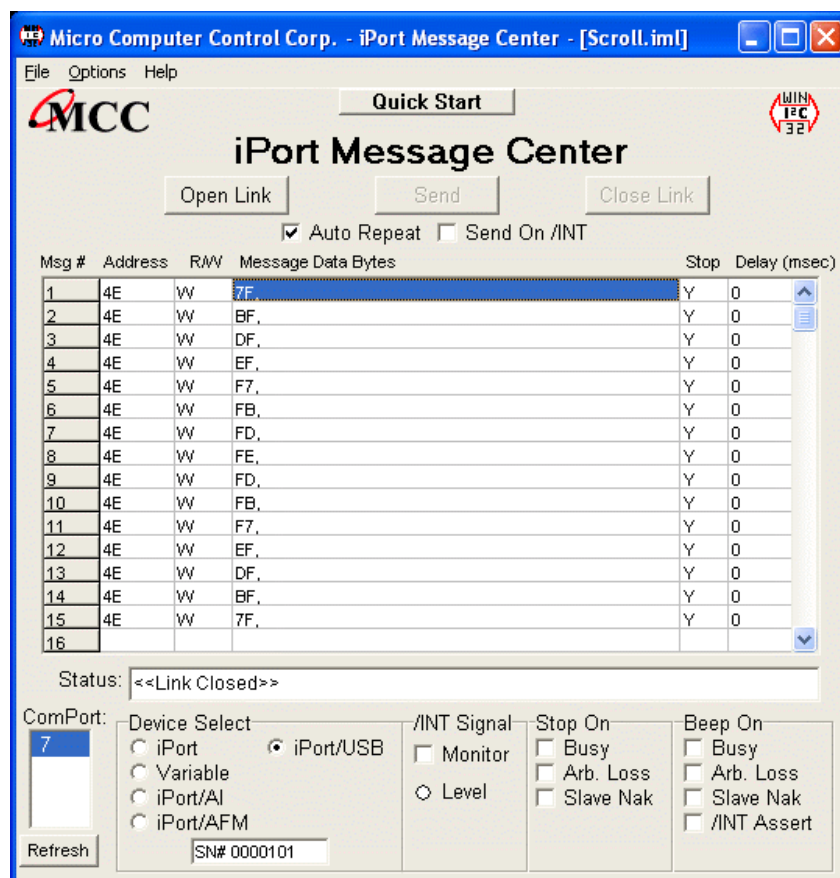
1 iPort Utility Pack for Windows

The iPort Utility Pack for Windows is your express lane to I²C Bus communications. The Utility Pack includes two (2) Windows-based applications (Message Center and Message Manager) that will help you get started sending and receiving I²C Bus messages quickly and easily.

1.1 iPort Message Center

The iPort Message Center, our most popular application, operates with all versions of our I²C Bus Host Adapters. With the Message Center, you can create, save, and automatically execute scripts of I²C Bus messages. I²C Bus message activity includes:

- Master Transmit
- Master Receive

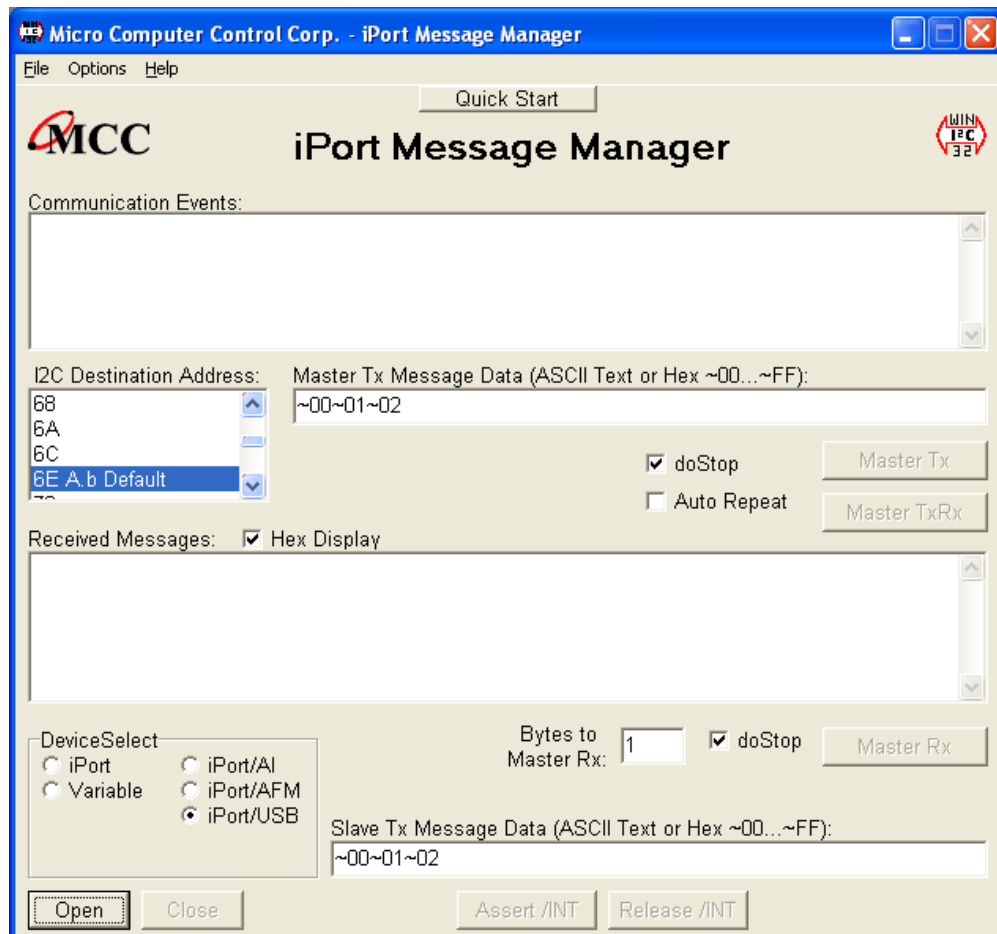


Main Screen (Typical)

1.2 iPort Message Manager

The iPort Message Manager operates with all versions of our I²C Bus Host Adapters. Using the Message Manager, you can perform all four (4) modes of I²C Bus message activity, including:

- Master Transmit
- Master Receive
- Slave Transmit
- Slave Receive



Main Screen (Typical)

2 System Requirements

One of the following MCC I²C Bus adapters:

1. iPort (#MIIC-201) Windows to I²C Bus Host Adapter.
2. iPort DLL/USB (#MIIC-201D/U) I²C Bus Host Adapter.
3. Variable Clock Rate (#MIIC-201-V) I²C Bus Host Adapter.
4. iPort/AI (#MIIC-202) RS-232 to I²C Bus Host Adapter with ASCII Interface
5. iPort/AFM (#MIIC-203) RS-232 to I²C Bus Host Adapter with ASCII Fast Mode Interface.
6. iPort/USB (#MIIC-204) USB to I²C Bus Host Adapter.
7. iPort/LAN (#MIIC-205) Ethernet to I²C Bus Host Adapter.
8. i2cStick (#MIIC-207) USB to I²C Bus Host Adapter.

Windows XP, Vista, 7, or 8 (x86/x64).

1 free RS-232 Serial Port, USB port, or Ethernet port.

3 iPort Utility Pack Installation

3.1 Installing from CD

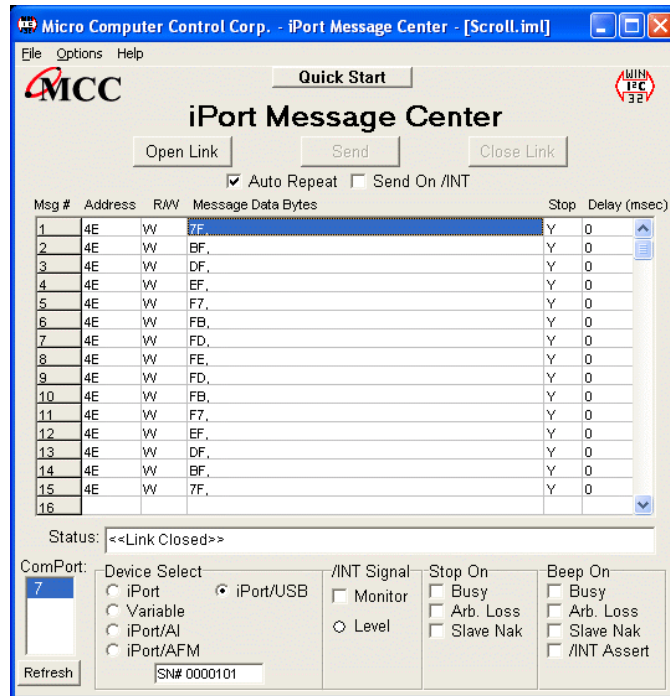
1. Insert a software distribution CD into your CD/DVD drive.
2. If the install program does not start automatically, select Start | Run and type “D:SETUP.EXE.” Click OK.
3. Follow instructions on screen.

3.2 Installing from the Web

1. Visit MCC’s web site (www.mcc-us.com), and click on the Download (Upgrades/Updates) link.
2. Follow the instructions listed on the Download (Upgrades/Updates) web page for your specific adapter.

4 iPort Message Center

The iPort Message Center supports I²C Master Transmit and Master Receive activities for all MCC I²C Bus host adapters. With this program you can create, save, and execute scripts of I²C Master messages.



Main Screen (Typical)

The iPort Message Center allows a PC to become an I²C Master transmitter or receiving device, sending I²C messages between the PC and one or more I²C devices across an I²C Bus.

The iPort Message Center is designed to be a simple application for experimenting with I²C messages. It provides methods to:

1. Enter/Edit a list of I²C Master Transmit or Receive Messages.
2. Save and/or Load a list of I²C Master messages to/from disk.
3. Transmit the current list of I²C Master messages, with the option to auto-repeat upon completion, send on INT signal assertion (with INT signal supported adapters only), and beep or stop on special I²C Bus events.
4. Use command line arguments to automatically load, send, and save I²C messages from a batch file or another program.

Each I²C message can transfer up to 32 bytes of 8-bit data, with Repeated Start and Time Delay options.

4.1 Message Center Operations

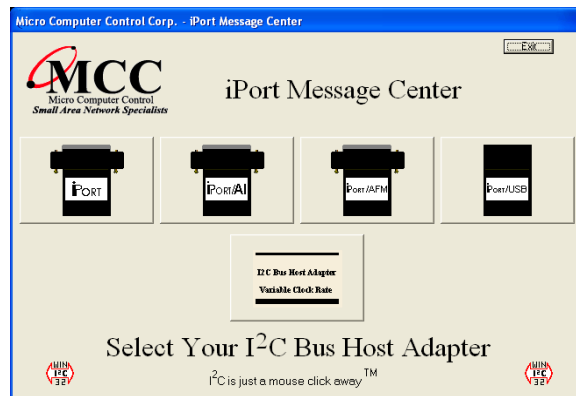
Communicating with another device on the I²C Bus is easy. Just install the software as described in Section 3, then follow these simple steps:

4.1.1 Starting the Message Center

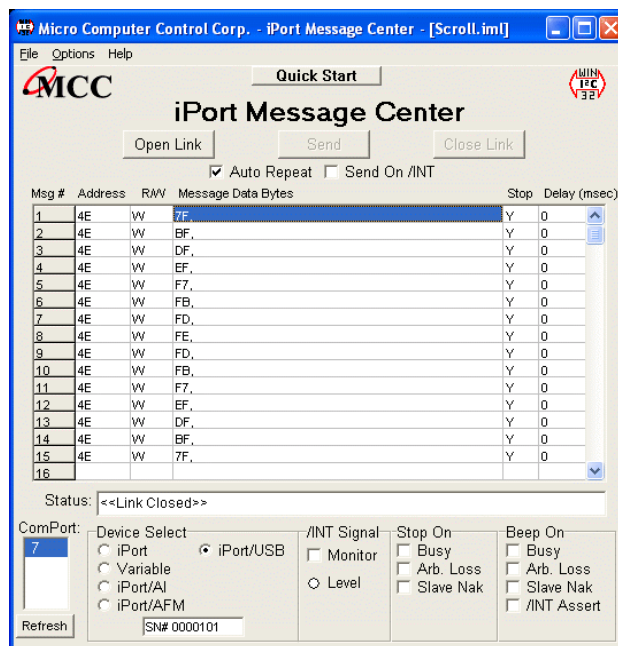
Click, Start | Programs | iPort Utility Pack | iPort Message Center

4.1.2 Selecting the Adapter

Select the I²C adapter you are using by clicking the corresponding adapter image (see Opening Screen), or the Device Select checkbox (see Main Application Screen).



Opening Screen (Typical)



Main Screen (Typical)

4.1.3 Select the Communications Port

Use the “ComPort:” control to select the communication port connected to the I²C adapter. If a USB or Ethernet based device is selected, the serial number for the adapter is displayed. In addition to legacy (RS-232), USB, and Ethernet based Virtual Communication Ports, Message Center supports USB and network connected local or remote RS-232 ports via the Windows Com driver.

4.1.4 Options Menu

Use the Options menu to override default Baud Rate and I²C Bus Clock rate settings. Default settings and options are adapter dependant.

4.1.5 Establish Adapter Communications Link

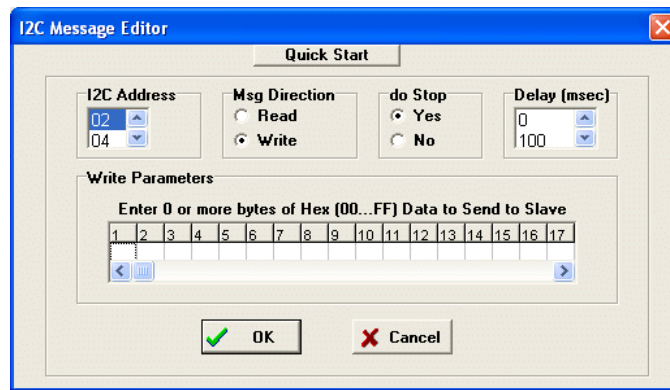
Establish the communications link to the I²C adapter by clicking the Open Link button.

The Message Center sets the adapter’s own I²C Slave address to 0xFE. Once the link has opened successfully, you are an active I²C node. I²C messages entered into the message spreadsheet can be transmitted upon request. If the link open is not successful, follow the on-screen directions. Make sure the communications port is working, is enabled in the Windows Device Manager, and is not being used by other software.

4.1.6 Entering or Editing I²C Messages

I²C messages can be entered with the Message Editor, or a previously recorded message list can be loaded from the File menu.

To enter or edit a message, open the “I²C Message Editor” screen by double clicking on a message row in the spreadsheet.



Use the I²C Message Editor to:

1. Set I²C Address.

The I²C Address is the I²C slave address of the slave device being addressed on the bus. All slave addresses are displayed as even numbers (00...FE), representing the 7 most significant bits of the 8-bit slave address transmitted on the bus (aaaa aaa0).

The I²C adapter automatically supplies the 8th, least significant, Read/Write bit when it sends the slave address across the bus. For master write operations, the Read/Write bit is always transmitted as a logical 0 (aaaa aaa0). For master read operations, the Read/Write bit is always transmitted as a logical 1 (aaaa aaa1).

Use the I²C Address control to set the slave address of the slave device you want to address on the bus.

2. Set Message Read/Write Direction.

As a bus master device, the I²C adapter can write data to, or read data from, any device on the bus. Use the Msg Direction control to specify if the current message is a master write, or master read, operation. Upon making your selection, additional Write or Read parameters appear.

3. Specify Repeated Start Messages.

I²C Bus communications support an operation called Repeated Start. In this operation, a message is sent across the bus beginning with a Start Condition, but without a Stop Condition at the end of the message. The next message sent

across the bus begins with a Start Condition, in this case a Repeated Start.

An I²C Bus master, that successfully sends a message on the bus, owns the bus until that master sends a message with a terminating Stop Condition. The Repeated Start operation allows the bus master to retain control of the bus while sending one or more messages on the bus. This prevents other bus masters, in a multi-master system, from accessing the bus and interfering with message sequences.

The Message Center supports Repeated Starts with the doStop control. Sending an I²C message with doStop enabled will cause the message to be terminated with a Stop Condition. Sending an I²C message with doStop disabled will cause the message to end without a Stop Condition, allowing the next message to be sent with a Repeated Start.

4. Set Time Delay.

Message Center supports time delays after the completion of a message. Time delays can be used to synchronize or sequence bus messages with the activity of external devices.

5. Specify Write Data or Read Byte Count.

Enter the hexadecimal data you want to write to a slave receiver device, or the number of data bytes to read from a slave transmitter. Message Center supports up to 32 bytes of 8-bit data per message.

NOTE: The data you send may have special meaning to the receiving slave device, but to the Message Center, and the I²C adapter, message data has no special meaning. Consult your slave device's data sheet for details.

Click OK to accept the message and enter it into the spreadsheet.

Master Write messages display the message data in the spreadsheet. Master Read messages display 0xFF placeholders in the spreadsheet. Upon execution, actual data received from a slave transmitter replaces the placeholders in the message spreadsheet.

Repeat above steps for additional messages. The Message Center supports up to 32,000 messages in a list.

4.1.7 Inserting and Deleting Messages

You can insert a new message between existing messages by clicking once on a message below where you want to insert, then press the “Insert” key on your keyboard. The Message Editor also remembers the last message displayed, so double clicking on a blank spreadsheet row will allow you to copy a message. Delete a message by single clicking on the message row and pressing the “Delete” key on your keyboard.

4.1.8 Saving or Loading Message Lists

Message Center I²C message lists can be saved to, or loaded from, a disk file. To save the current message list, click File|Save on the menu bar. To open an existing message list, click File|Open List on the menu bar.

Message lists are maintained in ASCII text files (*.IML) that can be edited manually or created with a customer-developed program. See message list files for details.

4.1.9 Send the Message List

An I²C message list can be sent manually, or automatically in response to an INT signal assertion (with INT signal supported adapters only). To send the list manually, click the Send button on the main application screen. To send the list in response to an INT signal assertion (low), enable the “/INT Signal Monitoring” checkbox, and check the “Send on /INT” checkbox. The list will be sent each time the INT signal is asserted.

The Message Center also supports the repeated sending of a message list. If the Auto Repeat checkbox is checked, a message list will automatically repeat upon completion.

4.1.10 Special Event Handling

The Message Center supports the early termination of a message list, and beep on special events. See the “Stop On” and “Beep On” controls on the main application screen of available options.

4.1.11 Slave Not Acknowledging

If you get a “Slave Not Acknowledging” message in the Status window, this could indicate you have the wrong address in the I²C Destination Address, or the device is not answering to its address. Some slave devices temporarily stop acknowledging their address. Consult the slave device’s data sheet for details.

4.2 Command Line Arguments

The Message Center can be controlled via command line arguments. This feature allows the Message Center to be accessed from a batch file or another program.

Message Center Command Line Arguments	
Command	Description
iPort, iPort/AI, iPort/AFM, Variable, iPort/USB, iPort/LAN, i2cStick, iPortDLL/USB	Specify I ² C adapter type.*
COM1...COM99	Specify RS-232 communication port.
BAUD19200, BAUD57600, BAUD115200	Set RS-232 Baud Rate.*
CLOCK12.5K, CLOCK23K, CLOCK86K, CLOCK100K, CLOCK400K, VCLOCK	Set I ² C Bus Clock Rate.*
Monitor/INT	Enable /INT Signal Monitor.*
StopOnBusy	Stop sending on I ² C adapter busy.
StopOnArbLoss	Stop sending on I ² C Bus Arbitration Loss.
StopOnNak	Stop on Slave Negative Acknowledgment.
BeepOnBusy	Beep on I ² C adapter busy.
BeepOnArbLoss	Beep on I ² C Bus arbitration loss.
BeepOnNak	Beep on Slave Negative Acknowledgment.
BeepOn/INT	Beep on /INT signal assert (low).*
AutoLoad	Load I ² C message list file.
AutoSave	Save I ² C message list file.
AutoOpen	Open link to I ² C adapter.
AutoSend	Send I ² C message list.
AutoExit	Exit after sending message list.

* Adapter specific commands. See command details below.

Command Line Syntax: `msgctr.exe AdapterType argument-list`

Example: `msgctr.exe iPort/AFM adctest01.iml AutoOpen AutoSend AutoExit`

4.2.1 Set Adapter Type

<i>Argument</i>	<i>Description</i>
iPort	iPort (#MIIC-201)
iPortDLL/USB	iPort DLL/USB (#MIIC-201D/U)
Variable	Variable Clock (#MIIC-201-V)
iPort/AI	iPort/AI (#MIIC-202)
iPort/AFM	iPort/AFM (#MIIC-203)
iPort/USB	iPort/USB (#MIIC-204)
iPort/LAN	iPort/LAN (#MIIC-205)
i2cStick	i2cStick (#MIIC-207)

The Adapter Type argument should be the first argument in the argument list as it controls the availability of other arguments. If the Adapter Type is not specified, the startup adapter selection screen will be presented.

4.2.2 Set RS-232 Communication Port

1st Available ComPort (Default)
COM1...COM99

Set the RS-232 communications port attached to the I²C adapter.

4.2.3 Set RS-232 Baud Rate

BAUD19200 (Default*)
BAUD57600 (iPort/AFM, iPort/USB, iPort/LAN, i2cStick* ONLY)
BAUD115200 (iPort/AFM, iPort/USB, iPort/LAN, i2cStick* ONLY)

Set the RS-232 Baud Rate. *i2cStick internally re-maps to 115.2K baud.

4.2.4 Set I²C Bus Clock Rate

CLOCK12.5K (iPort ONLY)
CLOCK23K (iPort/AFM, iPort/USB, iPort/LAN, i2cStick ONLY)
CLOCK86K (iPort/AFM, iPort/USB, iPort/LAN, i2cStick ONLY)
CLOCK100K (iPort, iPort/AI, /AFM, /USB, /LAN, i2cStick, Default)
CLOCK400K (iPort/AFM, iPort/USB, iPort/LAN, i2cStick ONLY)
VCLOCK=nnnHz (Variable ONLY. nnn=451...57787)

Set the I²C Bus Clock Rate to the specified value. The default rate for the Variable Clock adapter is 451Hz. The Variable Clock adapter does not support all rates within the specified range. The Message Center will adjust the specified rate to the nearest available supported rate.

4.2.5 Enable /INT Signal Monitor

Monitor/INT (on INT supported adapters only. Default=OFF)

Enable /INT signal monitoring.

4.2.6 Stop On Busy

StopOnBusy (Default=OFF)

Stop sending I²C messages if the adapter returns a "Busy" response to the host computer.

4.2.7 Stop On Arbitration Loss

StopOnArbLoss (Default=OFF)

Stop sending I²C messages if the adapter returns a "Bus Arbitration Loss" response to the host computer. Bus Arbitration Loss occurs when another I²C Bus master wins arbitration while the adapter is attempting to become a bus master.

4.2.8 Stop On Slave Negative Acknowledgment

StopOnNak (Default=OFF)

Stop sending I²C messages if the adapter returns a "Slave Not Acknowledging" response to the host computer. Slave Not Acknowledging occurs when the adapter is attempting to become a bus master and no slave device acknowledges the transmitted slave address.

4.2.9 Beep On Busy

BeepOnBusy (Default=OFF)

Generate a host computer beep if the adapter returns a "Busy" response to the host

computer.

4.2.10 Beep On Arbitration Loss

BeepOnArbLoss (Default=OFF)

Generate a host computer beep if the adapter returns a "Bus Arbitration Loss" response to the host computer. Bus Arbitration Loss occurs when another I²C Bus master wins arbitration while the adapter is attempting to become a bus master.

4.2.11 Beep On Slave Negative Acknowledgment

BeepOnNak (Default=OFF)

Generate a host computer beep if the adapter returns a "Slave Not Acknowledging" response to the host computer. Slave Not Acknowledging occurs when the adapter is attempting to become a bus master and no slave device acknowledges the transmitted slave address.

4.2.12 Beep On /INT Assert

BeepOn/INT (on INT supported adapters only. Default=OFF)

Generate a host computer beep if the adapter returns an "/INT Signal Assert" response to the host computer. /INT Signal Assert occurs if /INT Signal Monitoring is enabled and a high to low transition is detected on the adapter /INT signal connector.

4.2.13 Load I²C Message List File

AutoLoad=filename

AutoLoad="file name"

filename.iml

"file name.iml"

Automatically open file with extension .IML and load messages into Message Center spreadsheet.

4.2.14 Saved I²C Message List File

AutoSave=filename
AutoSave="file name"

Automatically save message list to the specified file upon executing AutoExit. Use to save message data read from a slave transmitter device.

4.2.15 Auto Open

AutoOpen Auto Open Link to I²C Adapter

Open link to the adapter.

4.2.16 Auto Send

AutoSend Auto Send I²C Message List

Send I²C messages loaded with the AutoLoad command.

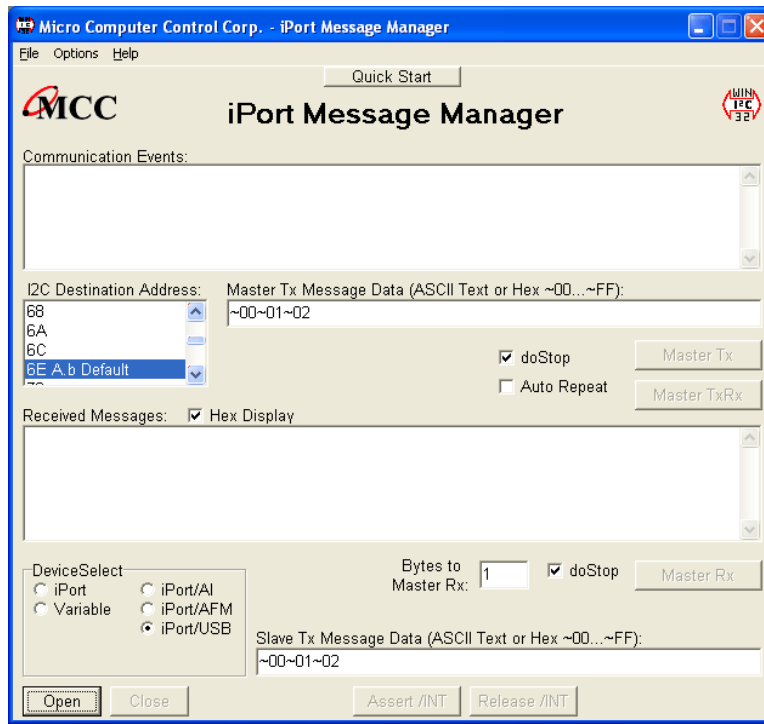
4.2.17 Auto Exit

AutoExit Auto exit after sending the message list.

Message Center will auto exit after sending the last message in the I²C message list.

5 iPort Message Manager

The iPort Message Manager supports I²C Master and Slave, Transmit and Receive activities for all MCC I²C Bus host adapters, allowing a PC to become an I²C Master or Slave device, transmitting or receiving I²C messages between the PC and one or more I²C devices across an I²C Bus.



Main Screen (Typical)

The Message Manager is designed to be a simple application for experimenting with I²C messages. Message Manager provides methods to:

1. Set the I²C adapter's own I²C Slave address, General Call Enable, and other operating parameters.
2. Master Transmit ASCII text or Hex (00...FF) data to a specified I²C Slave Receiver device.
3. Master Receive data from a specified I²C Slave device.
4. Perform Master Read after Write operations.
5. Slave Transmit data to a requesting I²C Master device.
6. Display Master or Slave Receive data in hexadecimal or ASCII.
7. Display I²C Bus communication events.
8. Assert or release the INT signal (on supported adapters only).

5.1 Message Manager Operations

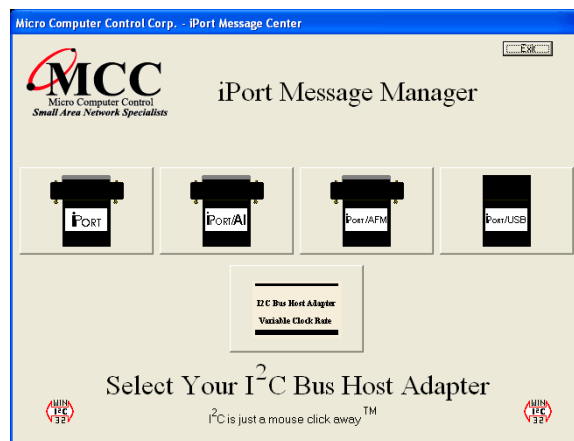
Communicating with another device on the I²C Bus is easy. Just install the software as described in Section 3, then follow these simple steps:

5.1.1 Starting the Message Manager

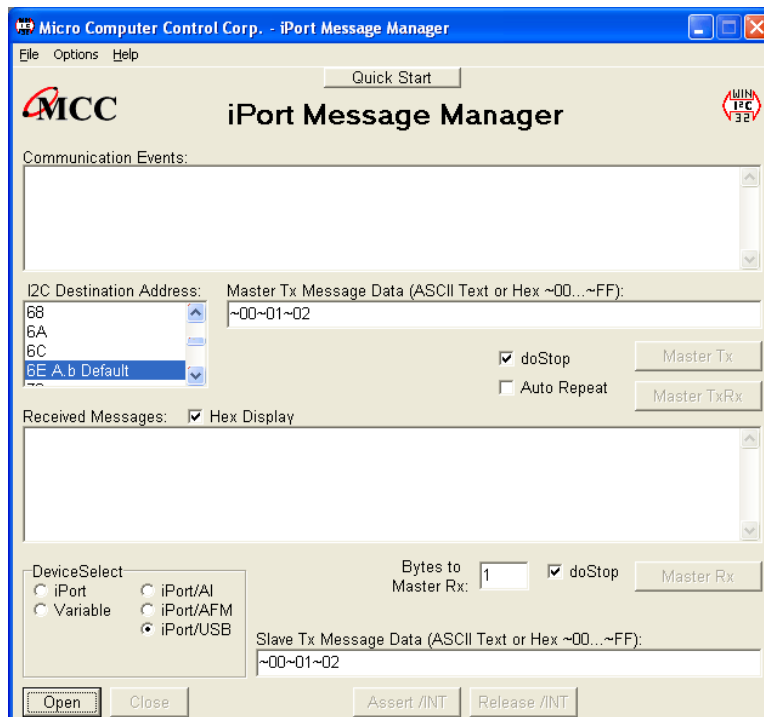
Click, Start | Programs | iPort Utility Pack | iPort Message Manager

5.1.2 Select the Adapter

Select the I²C adapter you are using by clicking the corresponding adapter image (see Opening Screen), or the Device Select checkbox (see Main Screen).



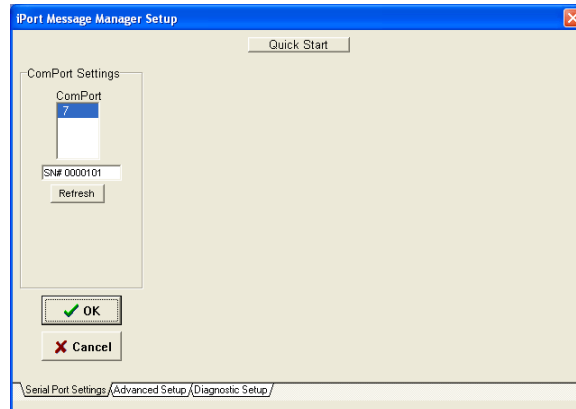
Opening Screen (Typical)



Main Screen (Typical)

5.1.3 Establish Adapter Communications Link

On the main screen, click the Open button to view the Set Up Screen. Three levels of setup options are available, Basic, Advanced, and Diagnostic. Only Basic setup is required.



Basic Set Up Screen

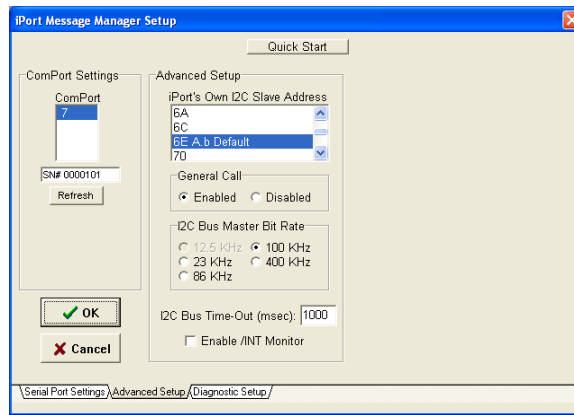
5.1.3.1 Basic Setup

Use the “ComPort” control to select the communication port connected to the I²C adapter. If a USB or Ethernet based device is selected, the serial number for the adapter is displayed. In addition to legacy (RS-232), USB, and Ethernet based Virtual Communication Ports, Message Center supports USB and network connected local or remote RS-232 ports via the Windows Com driver.

Select from the list of available baud rates. Then click OK.

After a few moments, the Communication Events window on the Main Application screen should report “I²C Open Successful.”

If open is not successful, follow the on-screen instructions. Make sure the communications port is working, is enabled in the Windows Device Manager, and is not being used by other software. Additional communication port open information is available in the log file. See Diagnostic Setup options.



Advanced Set Up Screen

5.1.3.2 Advanced Setup

On the Advanced Setup screen you can set the following parameters:

Adapter's Own I²C Slave Address

Select the I²C adapter's own slave address. The adapter will acknowledge messages sent to this slave address. The default address is 0x6E.

General Call Enable

General Call Enable allows the I²C adapter to respond as a slave receiver to the I²C General Call Address (0x00). General Call is used by a master to broadcast an I²C message to multiple devices. The default value is enabled.

I²C Bus Master Bit Rate

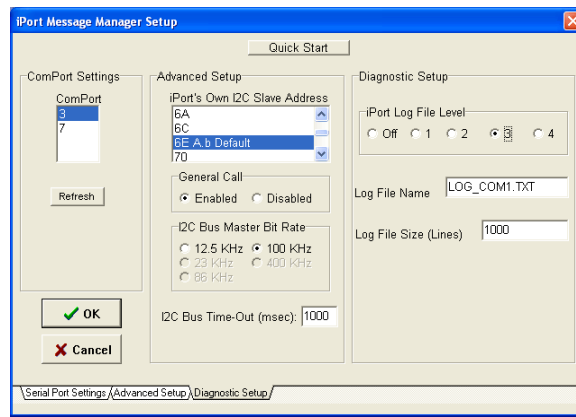
Select I²C Bus speed during master operations. 100kHz is standard mode. 400kHz is fast mode. Available rates are I²C adapter dependant.

I²C Bus Time-Out

Specify how long the I²C adapter will wait before reporting an I²C Bus inter-byte time-out (0 = no time-out, 1 to 32767 milliseconds, iPort/AI fixed at 1 second).

Enable INT Signal Monitor (on supported adapters)

Enables monitoring of the INT signal state. INT state changes are reported in the main screen Communications Events window.



Diagnostic Set Up Screen

5.1.3.3 Diagnostic Setup (on supported adapters)

On the Diagnostic Set-up screen you can set the following parameters:

Log File Level

A log file is available for troubleshooting communication problems between the host computer and the I²C adapter. The log file is an ASCII text file viewable with any text editor. Select logging level. Level 1 provides minimum information. Level 4 provides maximum information.

Log File Name

Specify a log file name. Unless a path is specified, the log file will be created in the current working directory.

Log File Size

Specify log file length in lines. The log file overwrites earlier entries upon reaching the specified number on lines.

5.1.4 Sending I²C Messages

5.1.4.1 Master Operations

5.1.4.1.1 Specifying the Destination Address

The Destination Address is the I²C slave address of the slave device being addressed on the bus. All slave addresses are displayed as even numbers (00...FE), representing the 7 most significant bits of the 8-bit slave address transmitted on the bus (aaaa aaa0).

The I²C adapter automatically supplies the 8th, least significant, Read/Write bit when it sends the slave address across the bus. For master write operations, the Read/Write bit is always transmitted as a logical 0 (aaaa aaa0). For master read operations, the Read/Write bit is always transmitted as a logical 1 (aaaa aaa1).

On the main screen, use the I²C Destination Address list control to set the slave address of the slave device you want to address on the bus.

5.1.4.1.2 Repeated Start Messages

I²C Bus communications support an operation called Repeated Start. In this operation, a message is sent across the bus beginning with a Start Condition, but without a Stop Condition at the end of the message. The next message sent across the bus begins with a Start Condition, in this case a Repeated Start.

An I²C Bus master, that successfully sends a message on the bus, owns the bus until that master sends a message with a terminating Stop Condition. The Repeated Start operation allows the bus master to retain control of the bus while sending one or more messages on the bus. This prevents other bus masters, in a multi-master system, from accessing the bus and interfering with message sequences.

The Message Manager supports Repeated Starts with the doStop checkbox. Sending an I²C message with doStop checked will cause the message to be terminated with a Stop Condition. Sending an I²C message with doStop unchecked will cause the message to end without a Stop Condition, allowing the next message to be sent with a Repeated Start.

5.1.4.1.3 Auto Repeat

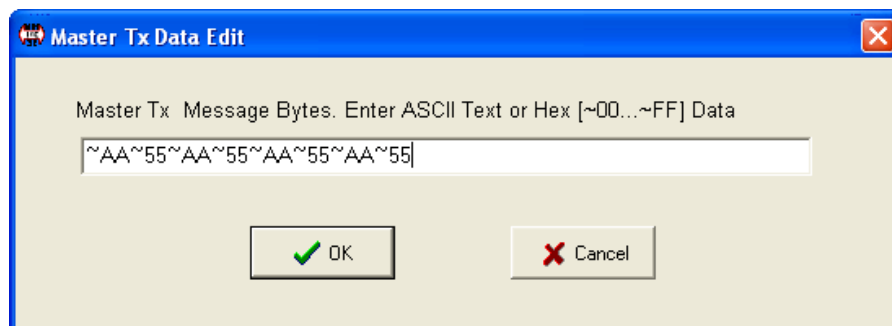
The situation often arises, where you would like to automatically repeat a master message operation.

The Message Manager supports auto-repeat with the Auto Repeat checkbox. You can automatically repeat a master operation by checking the Auto Repeat control before clicking the Master Tx, Master Rx, or Master TxRx buttons. The master operation repeats until the Auto Repeat control is unchecked.

5.1.4.1.4 Master Transmitting Data

Specifying Master Tx Message Bytes

Master Tx Message Bytes is the ASCII or Hexadecimal data you want to transmit to a slave receiver device. With the Message Manager, entering master transmit data is easy. On the main application screen, click on the Master Tx Message Bytes box to open the data editor.



In the data editor, enter one or more ASCII text characters or hexadecimal data bytes. Each hexadecimal byte is entered as two ASCII-Hex characters (00 to FF) preceded by a tilde (~) character. ASCII text and hex data can be intermixed, as long as each hex byte is preceded by a tilde.

For example, to enter hex data bytes 0x00, 0x01, and 0x02, enter the characters ~00~01~02 into the text box.

Each iPort Message Manager I²C message can include up to 80 bytes of 8-bit ASCII binary data.

NOTE: The data you send may have special meaning to the receiving slave device, but to the Message Manager, and the I²C adapter, message data has no special meaning. Consult your slave device's data sheet for details.

Click OK to accept the data.

Sending Master Transmit Messages

Click the Master Tx button to write the specified Master Tx Data Bytes to the selected destination slave device. If Auto Repeat is checked, the message will automatically repeat upon completion.

The Communications Events window on the main screen should report “Master Tx Complete.” If this message does not appear, check the slave device address, connections, and power.

If you get a “Slave Not Acknowledging” message in the Communications Events window, this could mean you have the wrong address in the I²C Destination Address, or the device is not answering to its address. Consult your slave device’s data sheet for details.

5.1.4.1.5 Master Receive Data

Specifying Data to Read

On the lower part of the main screen, set the Bytes to MasterRx edit box to the number of bytes you want to read. For example: Set this to 1 to read a single byte. Click on the MasterRx button to read the data from the selected slave device.

Data received from the slave is displayed in the Received Messages text box on the main screen. The Communications Events window should report “Master Rx Transfer Complete.” If this message does not appear, check the slave device address, connections, and power.

If you get a “Slave Not Acknowledging” message in the Communications Events window, this could mean you have the wrong address in the I²C Destination Address, or the device is not answering to its address. Consult your slave device’s data sheet for details.

Negative Acknowledge Last Byte

On supported adapters, the doNak checkbox gives you the option to acknowledge, or negatively acknowledge, the last byte read from a slave device. Some Slave Transmitter Devices require a negative acknowledgment on the final byte read from the slave device. I²C adapters not supporting this option automatically negatively acknowledge the last byte read.

5.1.4.1.6 Master Transmit and Receive

The Master TxRx button sends a master write message with no Stop Condition, immediately followed by a Repeated Start master read message with Stop.

5.1.4.2 Slave Operations

In addition to performing I²C Bus master operations, the Message Manager can also perform I²C bus slave transmit and receive operations.

5.1.4.2.1 Slave Transmit Data

Slave transmit data is entered in the Slave Tx Message Bytes text box control on the main screen. Data in this text box is automatically sent to a requesting master upon receiving a slave transmit request.

Like Master Transmit data, Slave Transmit data is entered with the data editor. To enter data to be transmitted, click on the Slave Tx Message Bytes text box to open the data editor. See “Specifying Master Tx Message Bytes” section for data entry details.

5.1.4.2.2 Slave Receive Data

Data bytes received from a Master Transmitter are automatically displayed in the main application screen Received Message window. Received data is displayed in ASCII printable, or hexadecimal (~00 to ~FF) formats. Use the Hex-Display checkbox to force ASCII printable data to display in hexadecimal format .

6 Uninstalling Software Components

Software components include the iPort Utility Pack for Windows, and for USB-

based adapters, the Virtual Communications Port (VCP) Device Driver. The following instructions can be used to remove either or both software components from your computer.

6.1 Uninstalling iPort Utility Pack for Windows

To uninstall the iPort Utility Pack for Windows software, use the Windows Control Panel “Programs and Features” (formerly “Add or Remove Programs”) utility. Note that uninstalling the iPort Utility Pack for Windows software does not uninstall the device or driver software.

6.2 Uninstalling VCP Device Driver

The USB VCP Device Driver can be uninstalled using Windows Device Manager (Start | Settings | Control Panel | System | Device Manager | Ports (COM & LPT)).

The Ethernet VCP Device Driver can be uninstalled from the iPort/LAN Driver Uninstaller short-cut on the iPort Utility Pack Start menu.

Part 3

Programmer's Reference

ASCII Command Interface Definitions

Programmer's Quick Start

Creating a custom iPort/LAN program is easier if you know what to expect. Follow these steps to manually control the iPort/LAN from your computer's keyboard and screen.

- 1 Install the iPort/LAN as directed in the "Hardware Set-Up" section of this User's Guide.
- 2 Use a terminal emulator program, like Windows' Hyperterminal, to start communicating with the I²C adapter. Remember to select the correct Com Port (COM1, COM2,...) and set the communication parameters to 19200 Baud, 8 Data Bits, No Parity, and 1 Stop Bit.
- 3 Enter **//[CR]** to get an iPort/LAN Status Report. Note: All iPort/LAN commands are terminated with a Carriage Return ([CR]) character. On most terminal emulators, press the Enter key.
- 4 Enter **/F0[CR]** (XON/XOFF) or **/F1[CR]** (RTS/CTS) to set iPort/LAN's communications Flow Control to match your terminal.
- 5 Enter **/Ixx[CR]** (xx = 02...FE even) to set iPort/LAN's Own I²C Slave Address.
- 6 Enter **/O[CR]** to Open the iPort/LAN Connection. The iPort/LAN does not need to be connected to an I²C Bus to open a connection.
- 7 Enter **/Dxx[CR]** (xx = 00...FE even) to select a Destination I²C Slave Address
- 8 Enter **/Ttext[CR]** (text = ASCII or Hex-Equivalent ~00...~FF) to Master Transmit a message to the current Destination I²C Slave device
- 9 Enter **/Rn[CR]** (n = 0...32767) to Master Read a message from the current Destination I²C Slave device.

iPort/LAN ASCII Command Interface

Note: [CR] = Carriage Return Code or Enter Key.
Syntax: [Select], (Optional), xx = [00..FE], n = [0..32767]

Command	Description
Ctrl/R, Ctrl/R, Ctrl/R	iPort/LAN Reset This command resets the iPort/LAN to its default state.
//[CR]	Status Display Display iPort/LAN status information.
/B[0 1 2][CR]	Serial Communication Baud Rate Control Set the serial communication baud rate (0 = 19.2, 1 = 57.6, 2 = 115.2 Baud)
/C[CR]	Close I²C Connection Disconnect from the I ² C Bus.
/Dxx[CR]	Set Destination I²C Slave Address Set the destination I ² C Slave Address for subsequent Master Transmit or Receive operations.
/E[0 1][CR]	Echo/Prompt Control [0 = Off, 1 = On] Enable/Disable data entry echo and prompts.
/F[0 1][CR]	Flow Control [0 = XON/XOFF, 1 = RTS/CTS] Select serial communication handshaking protocol.
/G[0 1][CR]	I²C General Call Control [0 = Disabled, 1 = Enabled] Enables/Disables iPort/LAN response to I ² C Bus General Call (00) messages.
/H[0 1][CR]	Hex Only Display Control [0 = Disabled, 1 = Enabled] Controls display format of received message data.
/Ixx[CR]	Set iPort/LAN's Own I²C Slave Address Sets iPort/LAN's own I ² C Slave Address. iPort/LAN will respond to I ² C Bus messages sent to this address.
/K[0 1 2 3][CR]	I²C Bus Clock Rate Control Set I ² C Bus Clock Rate Control (0=23, 1=86, 2=100, 3=400 KHz)
/M[CR]	Command Menu Display Displays iPort/LAN's Command Menu
/N([0 1 A R])[CR]	iNterrupt Signal Monitor/Control/Status Sets Monitor/Control/Status of INT line. [0 = Disable, 1 = Enable, A = Assert, R = Release, CR=Status]
/O[CR]	Open I²C Connection Activates iPort/LAN as an I ² C device attached to the bus.
/(*)Rnnnn[CR]	Master Read Message Read the specified number of data bytes from the current Destination I ² C Slave device. * = No Stop for Repeated Start.

/Stext[CR]	Slave Transmit Message Write the specified data bytes to a requesting I ² C Master Receiver device.
/(*)Ttext[CR]	Master Transmit Message Master Transmit the specified data bytes to the current Destination I ² C Slave device. * = No Stop for Repeated Start.
/Un[CR]	I²C Bus Time-oUt Set I2C Bus Time-oUt in msec (0=Disable)
/V[CR]	Display Firmware Version (Major XX.XX Minor)
/X[CR]	eXtended Commands (See Prompt or User's Guide)
/Y[CR]	Display Tx bYte Count (Requires Firmware V2.0 or later)

Synchronous Interface Events

Synchronous Events are those iPort/LAN interface activities initiated by the Host computer.

iPort/LAN Reset

Reset iPort/LAN to its default state.

The reset command consists of three (3) sequential Ctrl/R characters. Ctrl/R is the character code Decimal 18 and Hexadecimal 0x12. When using a terminal emulator program, you can generate a Ctrl/R by holding down the Ctrl key and pressing the R key.

Note: It is recommended that the Host computer turn off all serial port flow control before sending this command to override any flow control from the I²C adapter that could block the transmission. Flow control should be enabled once the response is received.

Command: Ctrl/R,Ctrl/R,Ctrl/R ‘iPort Reset
 Response: * ‘iPort/LAN Ready
 Default Setting: None

Status Display

Display iPort/LAN status.

Command: //[CR] 'Status Display

Response:

iPort/LAN I²C Host Adapter w/ASCII Fast Mode Interface Vxx.xx
Copyright © xxxx, Micro Computer Control Corp.
Visit our Web Site at: <http://www.mcc-us.com>

Serial Communications Baud Rate (19.2kHz)
Destination I²C Slave Address (xxH)
Echo/Prompt (Disabled)
Flow Control (XON/XOFF)
Hex Only Display (Enabled)
I²C Connection (Closed)
General Call (Enabled)
iPort's own Slave Address (xxH)
I²C Bus Clock Rate (100kHz)
iNterrupt Signal (Released)
I²C Bus Time-oUt (10000 msec)

Serial Communications Baud Rate

This command sets the serial communications baud rate.
(0=19.2k, 1=57.6k, 2= 115.2k)

Command: /B[0|1|2][CR] 'Set Serial Com Baud Rate
Response 1: /BC0[CR] 'Baud Change Complete
Response 2: /BC1[CR] 'Baud Change Complete
Response 3: /BC2[CR] 'Baud Change Complete
Response 3: /I89[CR] 'Invalid Command Argument

Default Setting: /B0[CR]

Close I²C Connection

Disconnect iPort/LAN from the I²C Bus.

Command: /C[CR] 'Close I²C Connection
Response: /CCC[CR] 'Close Connection Complete
Default Setting: 'Closed

Set Destination I²C Slave Address

Set the destination I²C Slave Address (Hex 0,2...FE) for all subsequent Master Transmit or Receive operations.

Command: /Dxx[CR] 'Set Destination I²C Slave Address
Response 1: * 'iPort/LAN Ready
Response 2: /I89[CR] 'Invalid Command Argument
Default Setting: 00

Echo/Prompt Control

This command enables or disables data entry echo and prompts used as feedback to manual operations from a computer terminal.

Command: /E[0|1][CR] 'Echo/Prompt Control [0 = Off, 1 = On]
Response: * 'iPort/LAN Ready
Default Setting: Off

Serial Communications Flow Control

Select the serial communication handshaking protocol to be used in communicating with the Host computer.

iPort/LAN implements either XON/XOFF (by default) or RTS/CTS flow control protocols. Flow control is used by the iPort/LAN to limit character flow to and from the Host computer to avoid overflowing internal communication buffers and lost data.

The XON/XOFF protocol inserts characters directly into the ASCII data stream. XON (Hexadecimal 0x11) is used to enable the flow of data. XOFF (Hexadecimal 0x13) is used to stop the flow of data.

The RTS/CTS protocol uses two additional wires in the cable connecting communicating devices. The RTS wire is an output signal. It indicates that the device generating the signal has buffer space available, and can receive data. The CTS wire is an input signal. It indicates that the other device has buffer space available, and can receive more data.

In general, XON/XOFF requires a minimal three-wire connection, Ground, Transmit Data, and Receive Data. This protocol does insert control characters into the stream of data, and may not be appropriate for all Host systems. If supported,

these control characters are normally automatically stripped out of the data stream by Host communication driver software, and are not visible at the application program level.

The RTS/CTS protocol requires a serial port, cabling, and Host communication driver software that supports the additional control signals.

Command: /F[0|1][CR] Flow Control [0 = XON/XOFF, 1 = RTS/CTS]
Response: * 'iPort/LAN Ready
Default Setting: XON/XOFF

I²C General Call Control

Enables or disables iPort/LAN response to I²C Bus General Call (Address x00) messages.

Command: /G[0|1][CR] 'I²C General Call [0 = Disabled, 1 = Enabled]
Response: * 'iPort/LAN Ready
Default Setting: Enabled

Hex Only Display Control

Controls Hex Only (~00...~FF) output of Master or Slave received data.

When enabled, all received I²C message data bytes are displayed in Hex (~00...~FF) format. When disabled, received I²C message data bytes representing ASCII printable characters (x20...x7F) are displayed as their ASCII printable character. Non-ASCII printable data bytes are always displayed in Hex (~00...~FF) form.

Command: /H[0|1][CR] 'Hex Only Display [0 = Disabled, 1 = Enabled]
Response: * 'iPort/LAN Ready
Default Setting: Enabled

Set iPort/LAN's Own I²C Slave Address

Sets iPort/LAN's own I²C Slave Address (Hex 2...FE). Subsequent I²C messages to this address will cause iPort/LAN to become an active Slave device on the bus.

Command: /Ixx[CR] 'Set iPort/LAN's Own I²C Slave Address

Response 1: * 'iPort/LAN Ready
Response 2: /I89[CR] 'Invalid Command Argument
Default Setting: 6E

I²C Bus Clock Rate Control

Set the I²C Bus master clock rate. (0=23, 1=86, 2=100, 3=400 KHz)

Command: /K[0|1|2|3][CR] 'Set iPort/LAN's Clock Rate

Response 1: * 'iPort/LAN Ready

Default Setting: /K2[CR]

The iPort/LAN I²C Bus master clock rate is controlled by the frequency of the oscillator used in the adapter. The oscillator frequency has been selected to give accurate RS-232 baud rates, as the RS-232 baud rate must exactly match the rate used by the host computer. Actual master I²C clock rates are close to, but not faster than, the stated rates. Slave I²C clock rates are driven by the external master device, with possible clock-stretching as required to store or retrieve message data.

Command Menu Display

Display iPort/LAN's command menu.

Command: /M[CR] 'Command Menu Display

Response:

iPort/LAN Command Menu Syntax: [Select], (Optional), xx=[00..FE], n=[1..32767]

// Status Display
/B[0|1|2] RS-232 Baud Rate Control (0=19.2, 1=57.6, 2=115.2KHz)
/C Close I2C Connection
/Dxx Set Destination I2C Slave Address
/E[0|1] Echo/Prompt Control (0=Disable, 1=Enable)
/F[0|1] Flow Control (0=XON/XOFF, 1=RTS/CTS)
/G[0|1] General Call Control (0=Disable, 1=Enable)
/H[0|1] Hex Only Display Control (0=Disable, 1=Enable)
/Ixx Set iPort/LAN's Own I2C Slave Address
/K[0|1|2|3] I2C Bus Clock Rate Control (0=23, 1=86, 2=100, 3=400 KHz)
/M Menu Display
/N([0|1|A|R]) iNterrupt Signal Monitor/Control/Status
(0=Disable, 1=Enable / A=Assert, R=Release / <CR>=Status)

/O	Open I2C Connection
/(*)Rn	Master Rx Message *=No Stop
/S(text)	Slave Tx Message
/(*)T(text)	Master Tx Message *=No Stop
/Un	Set I2C Bus Time-out in msec 0=Disable)
/V	Display Firmware Version (Major XX.XX Minor)
/X[...]...	Extended Cmds (See Prompt or User's Guide)
/Y	Display Tx bYte Count

Interrupt Signal Control/Status

The INT signal allows the iPort/LAN to participate in INT master and/or slave communications.

	Control
Command:	/N0[CR] Disable Monitor
	/N1[CR] Enable Monitor
	/NA[CR] Assert INT Signal
	/NR[CR] Release INT Signal

	Status
Command:	/N[CR] Status
Response:	/NSA INT Asserted
	/NSR INT Released

Response: * 'iPort/LAN Ready
 Default Setting: /N0, /NR

Open I²C Connection

Activates iPort/LAN as an active device on the I²C Bus.

Command:	/O[CR]	'Open I ² C Connection
Response:	/OCC[CR]	'Open Connection Complete
Default Setting:		Closed

Master Read Message

This command causes iPort/LAN to read the specified number of data bytes from the currently selected Destination I²C Slave Address with or without generating an I²C Stop condition after the last byte is received.

Enter Byte Count (Decimal 0...32767) then Press Enter, or ESCape to Cancel. A Byte Count of Zero (0) represents a Variable Length message, where the first byte read from the I²C Slave device indicates the number of additional trailing bytes that are available to read. The iPort/LAN automatically reads the first byte, then the additional bytes as specified by the first byte. All message bytes including the Length byte are returned to the Host computer.

The received text is a representation of the data bytes within the Master Receive message. The format of this data is controlled by the current setting of the Hex Only Display Control.

If the slave device acknowledges its I²C Slave Address, the specified number of bytes are read. The iPort/LAN acknowledges all bytes read except the last. If not disabled, the message is then terminated with an I²C Stop condition.

Sending Master Receive messages with No Stop allows the Master to retain exclusive control of the I²C Bus until it finally sends a Stop. During this time, the Master can send additional (Repeated Start) Master Transmit or Master Receive messages to the same or other I²C Slave devices.

Command: /(*)Rnnnn[CR] 'Master Read Message (* = No Stop)

Response 1: /MRCtext[CR] 'Master Read Complete

Response 2: /SNA[CR] 'Slave Not Acknowledging

Response 3: /I81[CR] 'iPort/LAN is Busy, Command Ignored

Response 4: /I83[CR] ' I²C Arbitration Loss Detected

Response 5: /I88[CR] 'iPort Connection Not Open

Response 6: /I89[CR] 'Invalid Command Argument

Default Setting: None

Slave Transmit Message

This command should be issued to iPort/LAN in response to a Slave Transmit Request (/STR). This command causes iPort/LAN to write the specified data bytes to the requesting I²C Master Receiver device.

Enter Message Bytes (1 or more Printable ASCII or Hex-equivalent ~00..~FF), then Press Enter, or ESCape to Cancel.

Note 1: Upon receiving a Slave Transmit request from a Master Receiver device on

the I²C Bus, the iPort/LAN outputs a Slave Transmit Request to its Host device, and initiates an I²C Clock Stretch (SCL Low) until a Slave Transmit command is received from the Host computer. While clock stretching, no other messages can be transmitted on the I²C Bus.

Note 2: The tilde (~) character and the Carriage Return (CR) characters are used as special marker characters within all iPort/LAN transmitted text messages. These characters may not be used within the text of a message, but must be replaced by the following "Hex equivalent" characters:

Tilde replaced by "~7E"

Carriage Return replaced by "~0D"

iPort/LAN automatically translates "Hex equivalent" characters to their single-byte value for transmission across the I²C Bus.

All entered data bytes are transmitted to the requesting Master Receiver device. Slave Transmit stops upon receiving the first negative acknowledgment (Nack) from the Master Receiver.

Command: /Stext[CR]	'Slave Transmit Message
Response 1: /STC[CR]	'Slave Transmit Complete
Response 2: /I88[CR]	'iPort Connection Not Open
Response 3: /I8A[CR]	'Slave Transmit Request Not Active, Cmd Ignored
Default Setting:	None

Examples:

/Sabcd1234[CR]	'ASCII Printable characters "abcd1234"
/S~00~01~02[CR]	'Binary data bytes 00, 01,02
/Sab~7Ecd[CR]	'Tilde embedded in ASCII Printable characters
/S12~0D24[CR]	'Carriage Return embedded in ASCII Printable characters

Master Transmit Message

Write the specified data bytes to the currently selected Destination I²C Slave Address with or without generating an I²C Stop condition after the last byte is transmitted.

Enter Message Bytes (0 or more Printable ASCII or Hex-equivalent ~00..~FF), then Press Enter, ESCape to Cancel.

Note: The tilde (~) character and the Carriage Return (CR) characters are used as special marker characters within all iPort/LAN transmitted text messages. These characters may not be used within the text of a message, but must be replaced by the following "Hex-equivalent" characters:

Tilde replaced by "~7E"

Carriage Return replaced by "~0D"

iPort/LAN automatically translates "Hex equivalent" characters to their single-byte value for transmission across the I²C Bus.

All entered data bytes are transmitted to the Destination I²C Slave Receiver device. Master Transmit stops upon receiving the first negative acknowledgment (Nack) from the Slave Receiver. If not disabled, the message is then terminated with an I²C Stop condition.

Sending Master Transmit messages with No Stop allows the Master to retain exclusive control of the I²C Bus until it finally sends a Stop. During this time, the Master can send additional (Repeated Start) Master Transmit or Master Receive messages to the same or other I²C Slave devices.

Command: /(*)Ttext[CR]	'Master Transmit Message (* = No Stop)
Response 1: /MTC[CR]	'Master Transmit Complete
Response 2: /SNA[CR]	'Slave Not Acknowledging
Response 3: /I81[CR]	'iPort/LAN is Busy, Command Ignored
Response 4: /I83[CR]	' I ² C Arbitration Loss Detected
Response 5: /I88[CR]	'iPort Connection Not Open
Default Setting:	None

Examples:

/Tabcd1234[CR]	‘ASCII Printable characters "abcd1234"
/T~00~01~02[CR]	‘Binary data bytes 00, 01,02
/*T~00~01~02[CR]	‘Binary data bytes 00, 01,02 with No Stop
/Tab~7Ecd[CR]	‘Tilde embedded in ASCII Printable characters
/T12~0D24[CR]	‘Carriage Return embedded in ASCII Printable characters

Set I²C Bus Time-out in msec

Set bus time-out in milliseconds.

The iPort/LAN reports a bus time-out if no inter-byte bus activity for the specified time occurs within an I²C Bus message.

Command: /Unnnnn[CR] 'I²C Bus time-oUt (nnnn = 0 (disable)...32000 msec)

Response: * 'iPort/LAN Ready

Default Setting: 10000 msec (10 seconds)

Display Firmware Version

Display firmware version

Command: /V[CR] 'Firmware Version

Response: /VCCXX.XX[CR] '(Major XX.XX Minor)

eXtended Commands

The eXtended commands are used to generate "out-of-spec" signaling. eXtended commands cannot use the adapter's I²C hardware to control the SCL and SDA lines, as the I²C hardware only generates I²C compatible signals. The eXtended commands use firmware to "bit-bang" the SCL and SDA lines. This firmware cannot operate as fast as the hardware, and it can be interrupted at any time by adapter internal interrupts. The eXtended commands run directly off the command characters as they are received on the serial link. Speed of execution of eXtended commands is controlled by the serial link communication rate, the execution speed of the firmware, delays caused by execution interruptions that may occur while a command is executing, and I²C Bus clock-stretching by external slave devices.

The following commands manipulate the I²C Clock (SCL) and data (SDA) lines.

Command: /X[S|~xx|R|r|P|0|1|?|D|d|C|c|L|A| |"...], then Press Enter or ESCape
Enter /X followed by zero or more sub-commands, the [CR]

Response: /XCC(see commands below)[CR]

High Level Sub-Commands:

S = Send Start

~xx = Send Byte (xx = 00...FF)(response = A or N)

R = Read Byte with Ack (response = ~xx)

r = Read Byte with Nak (response = ~xx)

P = Send Stop

Mid Level Sub-Commands:

0 = Send 0 Bit

1 = Send 1 Bit

? = Read Bit (response = 0 or 1)

Low Level Sub-Commands:

D = Set SDA High

d = Set SDA Low

C = Set SCL High

c = Set SCL Low

L = Read SCL (response = 0 or 1)

A = Read SDA (response = 0 or 1)

Miscellaneous Sub-Commands:

space = no action

"comment" = no action

Examples:

Master transmit three bytes to slave address 0x4e using high level, mid level, and low level sub-commands.

High Level Command: /X S ~4e ~01 ~02 ~03 P [CR]

High Level Response: /XCCAAAA[CR]

Mid Level Command: /X S 01001110 ? 00000001 ? 00000010 ? 00000011 ? P [CR]

Mid Level Response: /XCC0000[CR]

Low Level Command: /X dc dCcDCcdCcdCcDCcDCcDCcdCc DCAc

dCcdCcdCcdCcdCcdCcdCcDCc DCAcdCcdCcdCcdCcdCcdCcDCcdCc DCAc

dCcdCcdCcdCcdCcdCcdCcDCc DCAc dCD[CR]

Low Level Response: /XCC0000[CR]

Master read three bytes from slave address 0x4F. First two bytes are acknowledged by master.

Command: /X S ~4f Rrr P [CR]

Response: /XCCA~xx~xx~xx[CR] '(xx = 00...FF)

Master transmit a Write WCR command to a Xicor X9241 at slave address 0x50. WCR data is 0x00.

Command: /X S ~50 ~a0 ~00 P [CR]

Response: /XCCAAA[CR]

Master transmit a Write WCR command to a Xicor X9241 at slave address 0x50. WCR data is 0x3f.

Command: /X S ~50 ~a0 ~3f P [CR]

Response: /XCCAAA[CR]

Issue a Read WCR command to a Xicor X9241 at slave address 0x50.

Command: /X S ~50 ~90 ~R P [CR]

Response: /XCCAA~xx[CR] '(xx = 00...FF)

Issue an Increment Wiper command to a Xicor X9241 at slave address 0x50.

Command: /X S ~50 ~20 1 P [CR]

Response: /XCCAA[CR]

Issue a Decrement Wiper command to a Xicor X9241 at slave address 0x50.

Command: /X S ~50 ~20 0 P [CR]

Response: /XCCAA[CR]

Display Tx bYte Count

Returns the number of bytes received by the slave device in the last master transmit message.

Command: /Y[CR]

'Tx bYte Count

Response: /TBCn[CR]

'n =00000...32767

Asynchronous Interface Events

Asynchronous Events are those iPort/LAN interface activities initiated by the iPort/LAN I²C Host Adapter in response to activities on the I²C Bus.

Slave Transmit Request

This event is caused by the reception of an I²C Bus Slave Transmit message directed at the current iPort/LAN's own Slave address.

Prompt: /STR[CR] 'Slave Transmit Request

Command: /Stext[CR] 'Slave Transmit Text

The normal Host computer response is to send a Slave Transmit (/Stext[CR]) command.

Note: Upon receiving a Slave Transmit request from a Master Receiver device on the I²C Bus, iPort/LAN outputs a Slave Transmit Request to its Host device, and initiates an I²C Clock Stretch (SCL Low) until a Slave Transmit Text command is received from the Host computer. While clock stretching, no other messages can be transmitted on the I²C Bus.

Slave Receive Complete

This event is caused by the reception of an I²C Bus Slave Receive message directed at the current iPort/LAN's own Slave address.

The received text is a representation of the data bytes within the Slave Receive message. The format of this data is controlled by the current setting of the Hex Only Display Control.

Prompt: /SRCtext[CR] 'Slave Receive Complete

Command: None Required

General Call Receive Complete

This event is caused by the reception of an I²C Bus Slave Receive message directed at the I²C General Call Address (00), when iPort/LAN's General Call recognition is enabled.

The received text is a representation of the data bytes within the Slave Receive message. The format of this data is controlled by the current setting of the Hex Only Display Control.

Prompt: /GRCtext[CR] ‘General Call Receive Complete
Command: None Required

iPort/LAN Ready

Prompt: * ‘iPort/LAN Ready

Cause: iPort/LAN is ready for the next Host command.

Slave Not Acknowledging

Prompt: /SNA[CR] ‘Slave Not Acknowledging

Cause: There is no response (I²C Slave Address Acknowledgment) during a Master Transmit or Receive operation from an I²C Slave device at the current Destination I²C Address.

iPort/LAN Busy

Prompt: /I81[CR] ‘iPort/LAN Busy

Cause: The host computer attempted a Master operation while iPort/LAN was busy. The host computer should wait for any previously issued command to complete, process any pending slave events, and retry the last command.

I²C Bus Arbitration Loss

Prompt: /I83[CR] ‘I²C Arbitration Loss Detected

Cause: iPort/LAN lost I²C Bus Arbitration to another bus master device while Master Transmitting or Master Receiving an I²C message. Host should process any active slave events and repeat the last command.

I²C Bus Error Detected

Prompt: /I84[CR] ‘I²C Bus Error Detected

Cause: iPort/LAN has detected an error condition on the I²C Bus. The host computer should retry the last command or issue an iPort/LAN Reset command.

I²C Bus Time-out Detected

Prompt: /I85[CR] ‘I²C Bus Time-out Detected

Cause: iPort/LAN issues this response when it detects a byte transfer delay greater than the specified I²C Bus Time-out period. No corrective action is taken by the iPort/LAN regarding I²C Bus activity. No host computer response is required, but this event can be used to detect possible bus problems.

iPort/LAN Connection Closed

Prompt: /I88[CR] ‘iPort/LAN Connection is Closed.

Cause: The host computer is attempting to perform an I²C Bus message operation while the iPort/LAN Connection is Closed. The host computer should issue an Open I²C Connection command before attempting to perform I²C Bus message operations.

Invalid Command Argument

Prompt: /I89[CR] ‘Invalid Command Argument Detected

Cause: This event normally indicates the value of a host command argument was out of range. The host should reissue command with correct arguments.

Slave Transmit Request Not Active

Prompt: /I8A[CR] ‘Slave Transmit Request Not Active

Cause: This event indicates the host attempted to issue a Slave Transmit Text command when no Slave Transmit Request was present.

Invalid iPort/LAN Command

Prompt: /I8F[CR] ‘Invalid iPort/LAN Command

Cause: This event normally indicates that an invalid command was issued by the

host. The host should reissue the correct command.

iPort/LAN Receive Buffer Overflow

Prompt: /I90[CR] 'iPort/LAN Serial Receive Buffer Overflow

Cause: This event normally indicates that data sent to the iPort/LAN via the serial port has been lost. Check the host computer's Serial Port Flow Control (XON/XOFF, or Hardware) to make sure it matches current iPort/LAN Flow Control. Also, check if the host computer's FIFO buffers in its 16550 UART are enabled. If so, reduce or disable Transmit Data Buffering. On Windows-based host computers, see the Device Manager, COM port, Advanced Settings. You may need to power down the host computer for any FIFO change to take effect.

Example Code

The following examples are written in MS Visual Basic V3 for Windows using the serial communications control (MSCOMM.VBX). It can be used as a guide in implementing iPort/LAN interface programs in other programming languages and operating environments.

Note: Sample code is also available online at: www.mcc-us.com

iPort/LAN Reset

```
Comm1.Output = Chr$(18)      'Ctrl/R  
Comm1.Output = Chr$(18)      'Ctrl/R  
Comm1.Output = Chr$(18)      'Ctrl/R
```

iPort/LAN Initialization

```
Comm1.Output = "/f0"        'Set iPort/LAN XON/XOFF Flow Control  
Comm1.Output = Chr$(13)
```

```
Comm1.Output = "/i70"       'Set iPort/LAN's Own Slave Address  
Comm1.Output = Chr$(13)
```

```
Comm1.Output = "/d4e"       'Set Destination Slave Address  
Comm1.Output = Chr$(13)
```

```
Comm1.Output = "/o"         'Open I2C Connection  
Comm1.Output = Chr$(13)
```

Master Transmit Message

```
Comm1.Output = "/T~00~01"   'Send Master Tx Command  
Comm1.Output = Chr$(13)     'Terminate Command
```

Master Receive Message

```
Comm1.Output = "/R10"       'Send Master Rx Command  
Comm1.Output = Chr$(13)     'Terminate Command
```

Communication Event Processing

Static Sub Comm1_OnComm ()

Static LineBuf\$

While Comm1.InBufferCount

Msg\$ = Comm1.Input ' Get Comm input character

CharIn\$ = Msg\$

If Msg\$ = Chr\$(13) Then Msg\$ = "" ' Remove CR

If Msg\$ = Chr\$(10) Then Msg\$ = "" ' Remove LF

If Msg\$ = "*" Then ' if iPort/LAN Ready

Msg\$ = "****" ' Substitute Token

CharIn\$ = Chr\$(13) ' Terminate Line

End If

LineBuf\$ = LineBuf\$ + Msg\$ 'Add new text to line buffer

If CharIn\$ = Chr\$(13) Then ' if Carriage Return detected
iPortResp\$ = Left\$(LineBuf\$, 4) 'Isolate Response Code

' Test for iPort/LAN Synchronous Interface Events

If (StrComp(iPortResp\$, "/OCC") = 0) Then

' Open Connection Complete Processing

TextBox.Text = "/OCC Open Connection Complete"

ElseIf (StrComp(iPortResp\$, "/MTC") = 0) Then

' Master Transmit Complete Processing

TextBox.Text = "/MTC Master Tx Complete"

ElseIf (StrComp(iPortResp\$, "/MRC") = 0) Then

' Master Rx Complete Processing

TextBox.Text = LineBuf\$ 'Update Display

ElseIf (StrComp(iPortResp\$, "/STC") = 0) Then

' Slave Tx Complete Processing

TextBox.Text = "/STC Slave Tx Complete"

ElseIf (StrComp(iPortResp\$, "/CCC") = 0) Then

' Close Connection Complete Processing

TextBox.Text = "/CCC Close Connection Complete "

```

ElseIf (StrComp(iPortResp$, "/BC0") = 0) Then
    ' iPort/LAN Baud Change 0 {19.2K}
    TextBox.Text = "iPort/LAN Baud Change 0 {19.2K} "

ElseIf (StrComp(iPortResp$, "/BC1") = 0) Then
    ' iPort/LAN Baud Change 1 {57.6K}
    TextBox.Text = "iPort/LAN Baud Change 1 {57.6K} "

ElseIf (StrComp(iPortResp$, "/BC2") = 0) Then
    ' iPort/LAN Baud Change 2 {115.2K}
    TextBox.Text = "iPort/LAN Baud Change 0 {115.2K} "

' Test for iPort/LAN Asynchronous Interface Events

ElseIf (StrComp(iPortResp$, "/SRC") = 0) Then
    ' Slave Rx Complete Processing
    TextBox.Text = LineBuf$      'Update Display

ElseIf (StrComp(iPortResp$, "/GRC") = 0) Then
    ' General Call Rx Complete Processing
    TextBox.Text = LineBuf$      'Update Display

ElseIf (StrComp(iPortResp$, "/STR") = 0) Then
    ' Slave Tx Request Processing
    Comm1.Output = "/S~00~01" 'Send Slave Tx Msg
    Comm1.Output = Chr$(13)    'Terminate Command
    TextBox.Text = LineBuf$      'Update Display

' Test for iPort/LAN Response Messages

ElseIf (StrComp(iPortResp$, "****") = 0) Then
    TextBox.Text = "* iPort/LAN Ready" 'Update Display

ElseIf (StrComp(iPortResp$, "/SNA") = 0) Then
    TextBox.Text = "/SNA Slave Not Acknowledging"

ElseIf (StrComp(iPortResp$, "/I81") = 0) Then
    TextBox.Text = "/I81 iPort/LAN Busy" 'Update Display

ElseIf (StrComp(iPortResp$, "/I83") = 0) Then

```

```

    TextBox.Text = "/I83 Arbitration Loss" 'Update Display

ElseIf (StrComp(iPortResp$, "/I84") = 0) Then
    TextBox.Text = "/I84 I2C Bus Error Detected"

ElseIf (StrComp(iPortResp$, "/I85") = 0) Then
    TextBox.Text = "/I85 I2C Bus Time-out Detected"

ElseIf (StrComp(iPortResp$, "/I88") = 0) Then
    TextBox.Text = "/I88 iPort/LAN Connection Closed"

ElseIf (StrComp(iPortResp$, "/I89") = 0) Then
    TextBox.Text = "/I89 Invalid Command Argument"

ElseIf (StrComp(iPortResp$, "/I8A") = 0) Then
    TextBox.Text = "/I8A Slave Tx Request Not Active"

ElseIf (StrComp(iPortResp$, "/I8F") = 0) Then
    TextBox.Text = "/I8F Invalid iPort/LAN Command"

ElseIf (StrComp(iPortResp$, "/I90") = 0) Then
    TextBox.Text = "/I90 iPort/LAN Rx Buffer Overflow"

Else
    TextBox.Text = LineBuf$ 'Other Update Display
End If
LineBuf$ = ""
End If
Wend
End Sub

```

iPort/LAN Revision Report

This section defines revisions and changes made to the iPort/LAN interface:

Revision: 1.00

1 Initial Release

Additional Information

For additional information on the I²C Bus, please refer to the following:

“What is I²C?”

www.mcc-us.com/I2CBusTechnicalOverview.pdf

“Frequently Asked Questions (FAQ)”

www.mcc-us.com/faq.htm

"The I²C and How to Use It"

www.mcc-us.com/i2chowto.htm

Appendix A - I²C Connector Information

Interface Connector and Plug Information

MCC uses two (2) different connectors and plug assemblies. We have found these parts to be compatible.

I²C Receptacle Connectors

Molex SEMCONN ACCESS.bus Receptacle Connector

Molex Part # 15-83-0064

AMP SDL (Shielded Data Link) Connectors for ACCESS.bus

AMP Part # 4-1761206-1

I²C Plug Connectors

Molex SEMCONN ACCESS.bus Plug

Molex Part # 15-83-1564

AMP SDL (Shielded Data Link) Plug for ACCESS.bus

Boot	Amp Part # 520851-1
Ferrule	Amp Part # 520433-1
SDL (Shell)	Amp Part # 520461-1
SDL (Shell)	Amp Part # 520460-1
SDL	Amp Part # 4-520424-1

The following I²C Cables are available from MCC

MCC Part # CAB4	I ² C Interface Cable, 48inches (4ft)
MCC Part # CAB8	I ² C Interface Cable, 96 inches (8ft)
MCC Part # CABCL	I ² C and SMBus Clip Lead Cable

Declaration of Conformity

FCC Statement

DECLARATION OF CONFORMITY WITH FCC RULES FOR ELECTROMAGNETIC COMPATIBILITY

We, Micro Computer Control Corporation, of 83 Princeton Avenue #1D / PO Box 275, Hopewell, New Jersey 08525 USA, declare under our sole responsibility that the product:

iPort/LAN (#MIIC-205) I²C Bus Host Adapter

to which this declaration relates:

Complies with Part 15 of the FCC Rules. Operation is subject to the following two conditions; (1) this device may not cause harmful interference, and (2) this device must accept any interference received, including interference that may cause undesired operation.

Test Laboratory Information:

MET Laboratories, Inc.

Test Report Number: EMC86645-FCC

Test Report Date: July 24, 2015

Technical file held by: Micro Computer Control Corporation, 83 Princeton Avenue #1D / PO Box 275, Hopewell, New Jersey 08525 USA, or its applicable authorized distributor or representative.

CE Declaration of Conformity

This Declaration of Conformity is issued by the indicated company which is solely responsible for the declared compliance.

Product(s): iPort/LAN

Product Part Number(s): MIIC-205

Product Description: I²C Bus Host Adapter

Applicable Directive(s): EC Directive 2004/108/EC

Compliant Standards:

EN 55022 : 2010

Conducted Emissions

Conducted Emissions (Telecommunication ports)

Radiated Emissions

EN 61326-1 : 2013

Immunity Test - Enclosure (Radiated)

Immunity Test - Conducted RF (AC power port)

Immunity Test - Conducted RF (Signals power port)

Immunity Test - Fast Transient Burst (AC Power Port)

Immunity Test - Fast Transient Burst (Signals Port)

Immunity Test - Voltage Dips and Interruptions

Immunity Test - Voltage Surges (AC Power Port)

Immunity Test - Electrostatic Discharge

Test Laboratory Information:

Cass Industries Ltd., Unit 1 Bankside Business Park, Coronation Street, Stockport SK5 7PG,
ENGLAND.

Test Report Number: CI06075 Ver 1.1

Test Report Date: December 7th, 2015

Technical file held by: Micro Computer Control Corporation, 83 Princeton Avenue #1D / PO
Box 275, Hopewell, New Jersey 08525 USA, or its applicable authorized distributor or
representative.

Responsible Company: Micro Computer Control Corporation, 83 Princeton Avenue #1D / PO
Box 275, Hopewell, New Jersey 08525 USA, or its applicable authorized distributor or
representative.

Signature of Authorized Representative:

Edward Thompson

Name: Edward Thompson

Title: President, Micro Computer Control Corporation

Date: 07-JAN-2016

MIIC-205-DoC-002